



[Go to Product page](#)

Datasheet for ABIN6258647

## anti-WNT8B antibody (Internal Region)

### 1 Image

#### Overview

Quantity:	100 µL
Target:	WNT8B
Binding Specificity:	Internal Region
Reactivity:	Human, Mouse
Host:	Rabbit
Clonality:	Polyclonal
Conjugate:	This WNT8B antibody is un-conjugated
Application:	Western Blotting (WB), ELISA, Immunocytochemistry (ICC), Immunofluorescence (IF)

#### Product Details

Immunogen:	A synthesized peptide derived from human WNT8B, corresponding to a region within the internal amino acids.
Isotype:	IgG
Specificity:	WNT8B Antibody detects endogenous levels of total WNT8B.
Predicted Reactivity:	Pig,Zebrafish,Bovine,Horse,Sheep,Rabbit,Dog,Chicken,Xenopus
Purification:	The antiserum was purified by peptide affinity chromatography using SulfoLink™ Coupling Resin (Thermo Fisher Scientific).

#### Target Details

Target:	WNT8B
---------	-------

## Target Details

---

Alternative Name:	WNT8B ( <a href="#">WNT8B Products</a> )
Background:	Description: Ligand for members of the frizzled family of seven transmembrane receptors. May play an important role in the development and differentiation of certain forebrain structures, notably the hippocampus. Gene: WNT8B
Molecular Weight:	32 kDa
Gene ID:	7479
UniProt:	<a href="#">Q93098</a>
Pathways:	<a href="#">WNT Signaling</a>

## Application Details

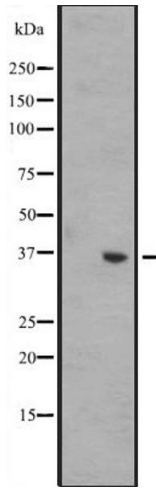
---

Application Notes:	WB 1:500-1:2000, ELISA(peptide) 1:20000-1:40000, IF/ICC 1:100-1:500
Restrictions:	For Research Use only

## Handling

---

Format:	Liquid
Concentration:	1 mg/mL
Buffer:	Rabbit IgG in phosphate buffered saline, pH 7.4, 150 mM NaCl, 0.02 % sodium azide and 50 % glycerol.
Preservative:	Sodium azide
Precaution of Use:	This product contains Sodium azide: a POISONOUS AND HAZARDOUS SUBSTANCE which should be handled by trained staff only.
Storage:	-20 °C
Expiry Date:	12 months



### Western Blotting

**Image 1.** Western blot analysis of WNT8B expression in A431 whole cell lysate ,The lane on the left is treated with the antigen-specific peptide.