

Datasheet for ABIN6258662
anti-SLC16A2/MCT8 antibody (Internal Region)



[Go to Product page](#)

4 Images

Overview

Quantity:	100 µL
Target:	SLC16A2/MCT8 (SLC16A2)
Binding Specificity:	Internal Region
Reactivity:	Human, Mouse, Rat
Host:	Rabbit
Clonality:	Polyclonal
Conjugate:	This SLC16A2/MCT8 antibody is un-conjugated
Application:	Western Blotting (WB), ELISA, Immunohistochemistry (IHC), Immunocytochemistry (ICC), Immunofluorescence (IF)

Product Details

Immunogen:	A synthesized peptide derived from human SLC16A2, corresponding to a region within the internal amino acids.
Isotype:	IgG
Specificity:	SLC16A2 Antibody detects endogenous levels of total SLC16A2.
Predicted Reactivity:	Pig,Horse,Rabbit
Purification:	The antiserum was purified by peptide affinity chromatography using SulfoLink™ Coupling Resin (Thermo Fisher Scientific).

Target Details

Target:	SLC16A2/MCT8 (SLC16A2)
---------	------------------------

Target Details

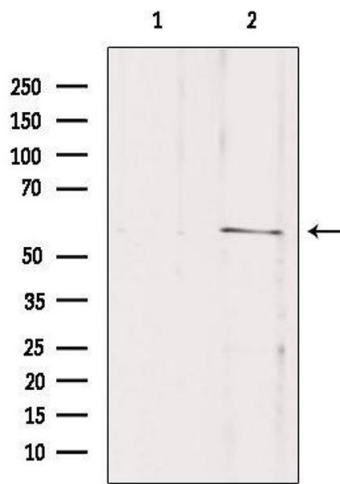
Alternative Name:	SLC16A2 (SLC16A2 Products)
Background:	Description: Very active and specific thyroid hormone transporter. Stimulates cellular uptake of thyroxine (T4), triiodothyronine (T3), reverse triiodothyronine (rT3) and diiodothyronine. Does not transport Leu, Phe, Trp or Tyr. Gene: SLC16A2
Molecular Weight:	60 kDa
Gene ID:	6567
UniProt:	P36021
Pathways:	Hormone Transport

Application Details

Application Notes:	WB 1:500-1:1000, IF/ICC 1:100-1:500, IHC 1:50-1:200, ELISA(peptide) 1:20000-1:40000
Restrictions:	For Research Use only

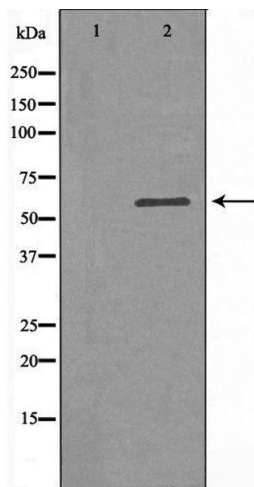
Handling

Format:	Liquid
Concentration:	1 mg/mL
Buffer:	Rabbit IgG in phosphate buffered saline , pH 7.4, 150 mM NaCl, 0.02 % sodium azide and 50 % glycerol.
Preservative:	Sodium azide
Precaution of Use:	This product contains Sodium azide: a POISONOUS AND HAZARDOUS SUBSTANCE which should be handled by trained staff only.
Storage:	-20 °C
Storage Comment:	Store at -20 °C. Stable for 12 months from date of receipt.
Expiry Date:	12 months



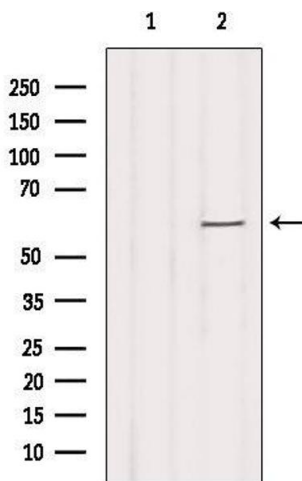
Western Blotting

Image 1. Western blot analysis of extracts from mouse brain, using SLC16A2 Antibody. Lane 1 was treated with the blocking peptide.



Western Blotting

Image 2. Western blot analysis of extracts from K562 cells, using SLC16A2 antibody. The lane on the left is treated with the antigen-specific peptide.



Western Blotting

Image 3. Western blot analysis of extracts from HeLa, using SLC16A2 Antibody. The lane on the left was treated with blocking peptide.

Please check the [product details page](#) for more images. Overall 4 images are available for ABIN6258662.