



[Go to Product page](#)

Datasheet for ABIN6258674
anti-Neurensin 1 antibody (N-Term)

1 Image

Overview

Quantity:	100 µL
Target:	Neurensin 1 (NRSN1)
Binding Specificity:	N-Term
Reactivity:	Human, Mouse, Rat
Host:	Rabbit
Clonality:	Polyclonal
Conjugate:	This Neurensin 1 antibody is un-conjugated
Application:	ELISA, Western Blotting (WB), Immunofluorescence (IF), Immunocytochemistry (ICC)

Product Details

Immunogen:	A synthesized peptide derived from human NRSN1, corresponding to a region within N-terminal amino acids.
Isotype:	IgG
Specificity:	NRSN1 Antibody detects endogenous levels of total NRSN1.
Predicted Reactivity:	Bovine,Horse,Sheep,Rabbit
Purification:	The antiserum was purified by peptide affinity chromatography using SulfoLink™ Coupling Resin (Thermo Fisher Scientific).

Target Details

Target:	Neurensin 1 (NRSN1)
---------	---------------------

Target Details

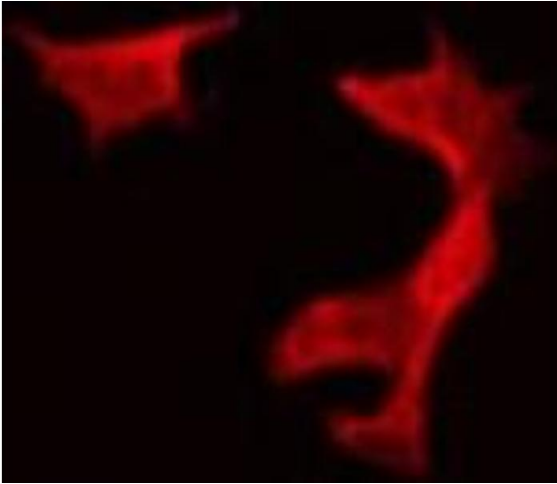
Alternative Name:	NRSN1 (NRSN1 Products)
Background:	Description: May play an important role in neural organelle transport, and in transduction of nerve signals or in nerve growth. May play a role in neurite extension. May play a role in memory consolidation (By similarity). Gene: NRSN1
Molecular Weight:	25 kDa
Gene ID:	140767
UniProt:	Q8IZ57

Application Details

Application Notes:	WB 1:500-1:1000, IF/ICC 1:100-1:500, ELISA(peptide) 1:20000-1:40000
Restrictions:	For Research Use only

Handling

Format:	Liquid
Concentration:	1 mg/mL
Buffer:	Rabbit IgG in phosphate buffered saline , pH 7.4, 150 mM NaCl, 0.02 % sodium azide and 50 % glycerol.
Preservative:	Sodium azide
Precaution of Use:	This product contains Sodium azide: a POISONOUS AND HAZARDOUS SUBSTANCE which should be handled by trained staff only.
Storage:	-20 °C
Storage Comment:	Store at -20 °C. Stable for 12 months from date of receipt.
Expiry Date:	12 months



Immunofluorescence (fixed cells)

Image 1. ABIN6275294 staining HeLa by IF/ICC. The sample were fixed with PFA and permeabilized in 0.1% Triton X-100, then blocked in 10% serum for 45 minutes at 25°C. The primary antibody was diluted at 1/200 and incubated with the sample for 1 hour at 37°C. An Alexa Fluor 594 conjugated goat anti-rabbit IgG (H+L) Ab, diluted at 1/600, was used as the secondary antibody