

Datasheet for ABIN6258681  
**anti-ACTN3 antibody (N-Term)**

## 4 Images

[Go to Product page](#)

## Overview

Quantity:	100 µL
Target:	ACTN3
Binding Specificity:	N-Term
Reactivity:	Human, Mouse, Rat
Host:	Rabbit
Clonality:	Polyclonal
Conjugate:	This ACTN3 antibody is un-conjugated
Application:	Western Blotting (WB), ELISA, Immunohistochemistry (IHC), Immunofluorescence (IF), Immunocytochemistry (ICC)

## Product Details

Immunogen:	A synthesized peptide derived from human Actinin alpha 2/3, corresponding to a region within N-terminal amino acids.
Isotype:	IgG
Specificity:	Actinin alpha 2/3 Antibody detects endogenous levels of total Actinin alpha 2/3.
Predicted Reactivity:	Bovine,Horse,Sheep,Rabbit,Dog,Chicken,Xenopus
Purification:	The antiserum was purified by peptide affinity chromatography using SulfoLink™ Coupling Resin (Thermo Fisher Scientific).

## Target Details

Target:	ACTN3
---------	-------

## Target Details

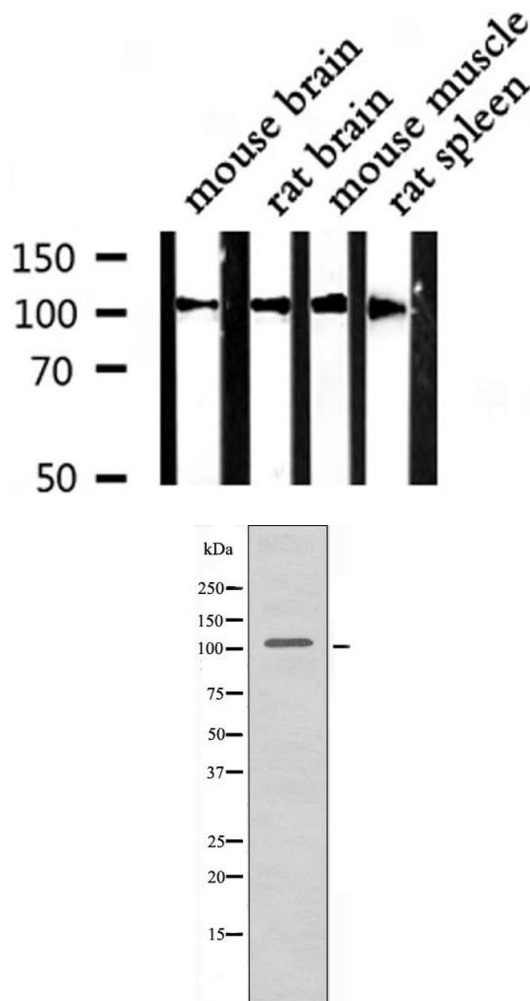
Alternative Name:	ACTN2,ACTN3 ( <a href="#">ACTN3 Products</a> )
Background:	Description: F-actin cross-linking protein which is thought to anchor actin to a variety of intracellular structures. This is a bundling protein. Gene: ACTN2
Molecular Weight:	103 kDa
Gene ID:	88, 89
UniProt:	<a href="#">P35609</a> , <a href="#">Q08043</a>
Pathways:	<a href="#">Cell-Cell Junction Organization</a>

## Application Details

Application Notes:	WB 1:500-1:1000, IHC: 1:50-1:200, IF/ICC 1:100-1:500, ELISA(peptide) 1:20000-1:40000
Restrictions:	For Research Use only

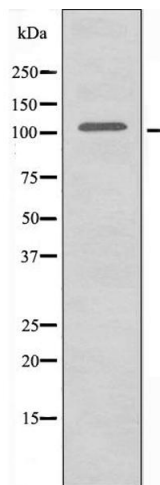
## Handling

Format:	Liquid
Concentration:	1 mg/mL
Buffer:	Rabbit IgG in phosphate buffered saline , pH 7.4, 150 mM NaCl, 0.02 % sodium azide and 50 % glycerol.
Preservative:	Sodium azide
Precaution of Use:	This product contains Sodium azide: a POISONOUS AND HAZARDOUS SUBSTANCE which should be handled by trained staff only.
Storage:	-20 °C
Storage Comment:	Store at -20 °C. Stable for 12 months from date of receipt.
Expiry Date:	12 months



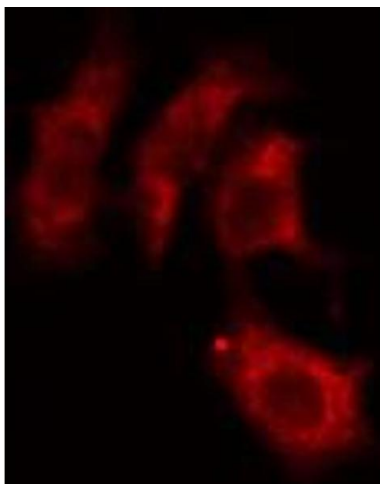
#### Western Blotting

**Image 1.** Western blot analysis of Actin α-2/3 expression in various lysates



#### Western Blotting

**Image 2.** Western blot analysis of extracts from HeLa cells using Actin α-2/3 antibody.



#### Immunofluorescence (fixed cells)

**Image 3.** ABIN6274241 staining HepG2 cells by IF/ICC. The sample were fixed with PFA and permeabilized in 0.1% Triton X-100, then blocked in 10% serum for 45 minutes at 25°C. The primary antibody was diluted at 1/200 and incubated with the sample for 1 hour at 37°C. An Alexa Fluor 594 conjugated goat anti-rabbit IgG (H+L) antibody (Cat.# S0006), diluted at 1/600, was used as secondary antibody.

Please check the [product details page](#) for more images. Overall 4 images are available for ABIN6258681.