

Datasheet for ABIN6258684

anti-AKR1E2 antibody (Internal Region)**3** Images[Go to Product page](#)

Overview

Quantity:	100 µL
Target:	AKR1E2
Binding Specificity:	Internal Region
Reactivity:	Human, Mouse, Rat
Host:	Rabbit
Clonality:	Polyclonal
Conjugate:	This AKR1E2 antibody is un-conjugated
Application:	Western Blotting (WB), ELISA, Immunohistochemistry (IHC), Immunofluorescence (IF), Immunocytochemistry (ICC)

Product Details

Immunogen:	A synthesized peptide derived from human AKR1CL2, corresponding to a region within the internal amino acids.
Isotype:	IgG
Specificity:	AKR1CL2 Antibody detects endogenous levels of total AKR1CL2.
Predicted Reactivity:	Pig,Bovine,Horse,Sheep,Rabbit,Dog
Purification:	The antiserum was purified by peptide affinity chromatography using SulfoLink™ Coupling Resin (Thermo Fisher Scientific).

Target Details

Target:	AKR1E2
---------	--------

Target Details

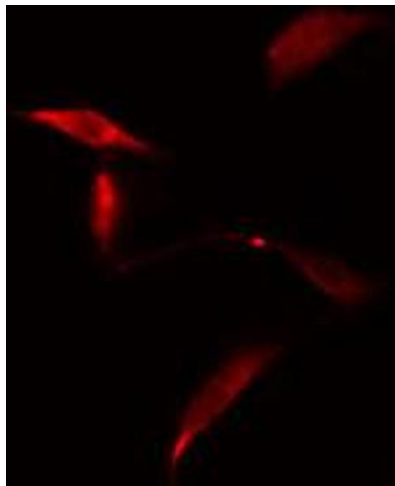
Alternative Name:	AKR1E2 (AKR1E2 Products)
Background:	Description: Catalyzes the NADPH-dependent reduction of 1,5-anhydro-D-fructose (AF) to 1,5-anhydro-D-glucitol (By similarity). Has low NADPH-dependent reductase activity towards 9,10-phenanthrenequinone (in vitro) (PubMed:12604216, PubMed:15118078). Gene: AKR1E2
Molecular Weight:	37 kDa
Gene ID:	83592
UniProt:	Q96JD6

Application Details

Application Notes:	WB 1:500-1:1000, IF/ICC 1:100-1:500, IHC 1:50-1:200, ELISA(peptide) 1:20000-1:40000
Restrictions:	For Research Use only

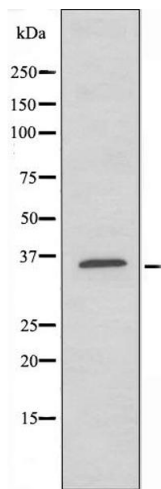
Handling

Format:	Liquid
Concentration:	1 mg/mL
Buffer:	Rabbit IgG in phosphate buffered saline , pH 7.4, 150 mM NaCl, 0.02 % sodium azide and 50 % glycerol.
Preservative:	Sodium azide
Precaution of Use:	This product contains Sodium azide: a POISONOUS AND HAZARDOUS SUBSTANCE which should be handled by trained staff only.
Storage:	-20 °C
Storage Comment:	Store at -20 °C. Stable for 12 months from date of receipt.
Expiry Date:	12 months



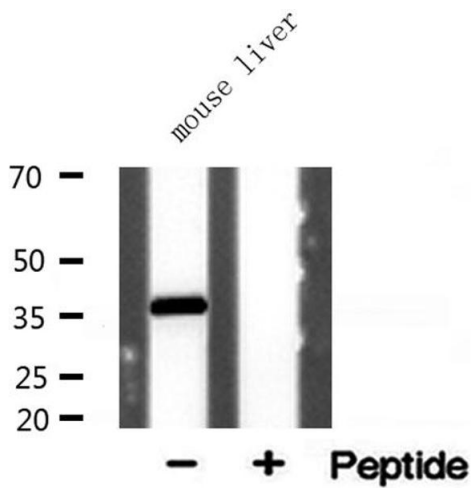
Immunofluorescence (fixed cells)

Image 1. ABIN6274829 staining A549 cells by IF/ICC. The sample were fixed with PFA and permeabilized in 0.1% Triton X-100, then blocked in 10% serum for 45 minutes at 25°C. The primary antibody was diluted at 1/200 and incubated with the sample for 1 hour at 37°C. An Alexa Fluor 594 conjugated goat anti-rabbit IgG (H+L) antibody (Cat.# S0006), diluted at 1/600, was used as secondary antibody.



Western Blotting

Image 2. Western blot analysis of extracts from HepG2 cells, using AKR1CL2 antibody.



Western Blotting

Image 3. Western blot analysis of extracts from mouse liver, using AKR1CL2 antibody.