

Datasheet for ABIN6258687

**anti-BRP44L antibody (Internal Region)****3** Images[Go to Product page](#)

## Overview

Quantity:	100 µL
Target:	BRP44L
Binding Specificity:	Internal Region
Reactivity:	Human, Mouse, Rat
Host:	Rabbit
Clonality:	Polyclonal
Conjugate:	This BRP44L antibody is un-conjugated
Application:	Western Blotting (WB), Immunohistochemistry (IHC), ELISA, Immunofluorescence (IF), Immunocytochemistry (ICC)

## Product Details

Immunogen:	A synthesized peptide derived from human BRP44L, corresponding to a region within the internal amino acids.
Isotype:	IgG
Specificity:	BRP44L Antibody detects endogenous levels of total BRP44L.
Predicted Reactivity:	Pig,Zebrafish,Bovine,Horse,Sheep,Chicken,Xenopus
Purification:	The antiserum was purified by peptide affinity chromatography using SulfoLink™ Coupling Resin (Thermo Fisher Scientific).

## Target Details

Target:	BRP44L
---------	--------

## Target Details

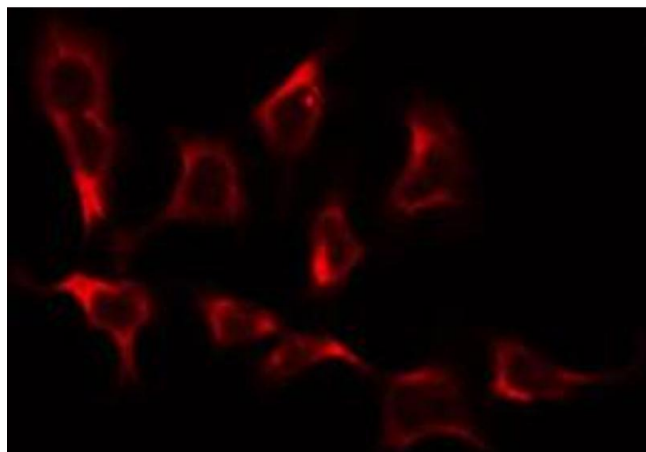
Alternative Name:	MPC1 ( <a href="#">BRP44L Products</a> )
Background:	Description: Mediates the uptake of pyruvate into mitochondria. Gene: MPC1
Molecular Weight:	12 kDa
Gene ID:	51660
UniProt:	<a href="#">Q9Y5U8</a>
Pathways:	<a href="#">Warburg Effect</a>

## Application Details

Application Notes:	WB 1:500-1:1000, IHC: 1:50-1:200, IF/ICC 1:100-1:500, ELISA(peptide) 1:20000-1:40000
Restrictions:	For Research Use only

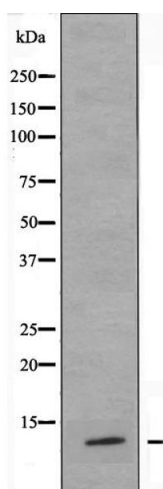
## Handling

Format:	Liquid
Concentration:	1 mg/mL
Buffer:	Rabbit IgG in phosphate buffered saline , pH 7.4, 150 mM NaCl, 0.02 % sodium azide and 50 % glycerol.
Preservative:	Sodium azide
Precaution of Use:	This product contains Sodium azide: a POISONOUS AND HAZARDOUS SUBSTANCE which should be handled by trained staff only.
Storage:	-20 °C
Storage Comment:	Store at -20 °C. Stable for 12 months from date of receipt.
Expiry Date:	12 months



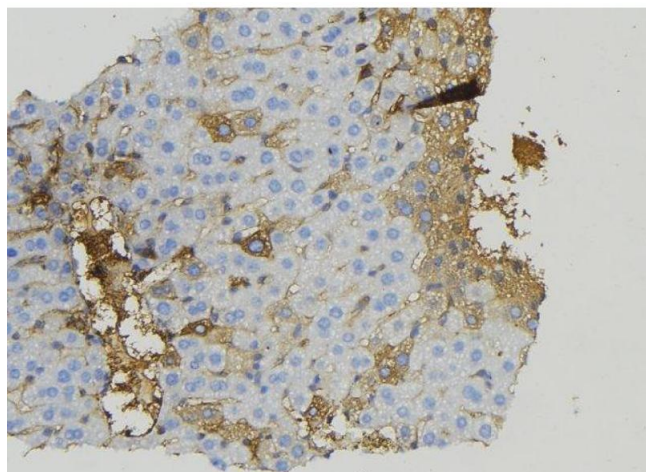
#### Immunofluorescence (fixed cells)

**Image 1.** ABIN6274923 staining COLO205 by IF/ICC. The sample were fixed with PFA and permeabilized in 0.1% Triton X-100, then blocked in 10% serum for 45 minutes at 25°C. The primary antibody was diluted at 1/200 and incubated with the sample for 1 hour at 37°C. An Alexa Fluor 594 conjugated goat anti-rabbit IgG (H+L) Ab, diluted at 1/600, was used as the secondary antibody.



#### Western Blotting

**Image 2.** Western blot analysis of extracts from COLO cells using BRP44L antibody.



#### Immunohistochemistry

**Image 3.** ABIN6274923 at 1/100 staining Mouse liver tissue by IHC-P. The sample was formaldehyde fixed and a heat mediated antigen retrieval step in citrate buffer was performed. The sample was then blocked and incubated with the antibody for 1.5 hours at 22°C. An HRP conjugated goat anti-rabbit antibody was used as the secondary