

Datasheet for ABIN6258698  
**anti-ALS2CR11 antibody**[Go to Product page](#)

## 2 Images

## Overview

|              |  |
|--------------|--|
| Quantity:    | 100 µL   |
| Target:      | ALS2CR11   |
| Reactivity:  | Human, Mouse   |
| Host:        | Rabbit   |
| Clonality:   | Polyclonal   |
| Conjugate:   | This ALS2CR11 antibody is un-conjugated  |
| Application: | ELISA, Western Blotting (WB), Immunocytochemistry (ICC), Immunofluorescence (IF) |

## Product Details

|                   |   |
|-------------------|---|
| Immunogen:        | A synthesized peptide   |
| Isotype:          | IgG   |
| Specificity:      | ALS2CR11 Antibody detects endogenous levels of total ALS2CR11   |
| Cross-Reactivity: | Human, Mouse (Murine)   |
| Purification:     | The antiserum was purified by peptide affinity chromatography using SulfoLink™ Coupling Resin (Thermo Fisher Scientific). |

## Target Details

|                   |  |
|-------------------|--|
| Target:           | ALS2CR11                                       |
| Alternative Name: | ALS2CR11 ( <a href="#">ALS2CR11 Products</a> ) |
| Background:       | Gene: C2CD6                                    |

## Target Details

|                   |                        |
|-------------------|------------------------|
| Molecular Weight: | 71 kDa                 |
| Gene ID:          | 151254                 |
| UniProt:          | <a href="#">Q53TS8</a> |

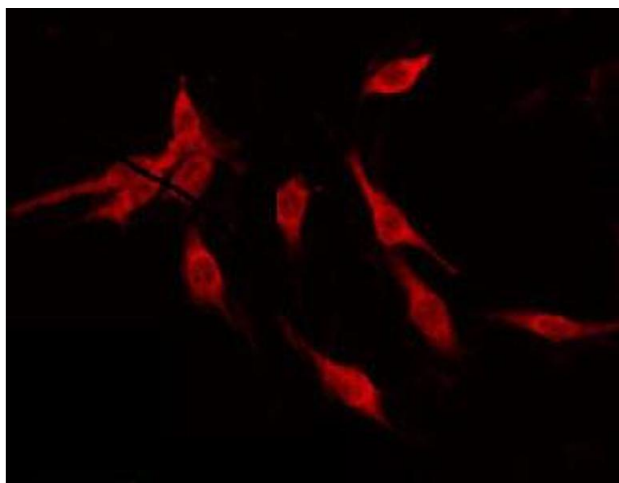
## Application Details

|                    |                                     |
|--------------------|-------------------------------------|
| Application Notes: | WB 1:500~1:1000, IF/ICC 1:100-1:500 |
| Restrictions:      | For Research Use only               |

## Handling

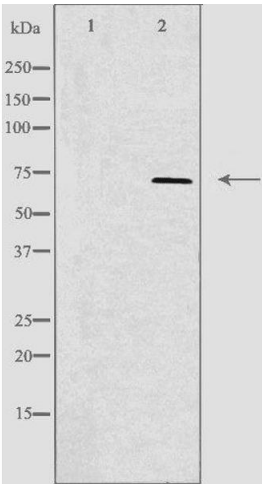
|                    |  |
|--------------------|--|
| Format:            | Liquid   |
| Concentration:     | 1 mg/mL  |
| Buffer:            | Rabbit IgG in phosphate buffered saline , pH 7.4, 150 mM NaCl, 0.02 % sodium azide and 50 % glycerol.                  |
| Preservative:      | Sodium azide   |
| Precaution of Use: | This product contains Sodium azide: a POISONOUS AND HAZARDOUS SUBSTANCE which should be handled by trained staff only. |
| Storage:           | -20 °C   |
| Storage Comment:   | Store at -20 °C.Stable for 12 months from date of receipt  |
| Expiry Date:       | 12 months  |

## Images



### Immunofluorescence (fixed cells)

**Image 1.** ABIN6274844 staining NIH-3T3 by IF/ICC. The sample were fixed with PFA and permeabilized in 0.1% Triton X-100, then blocked in 10% serum for 45 minutes at 25°C. The primary antibody was diluted at 1/200 and incubated with the sample for 1 hour at 37°C. An Alexa Fluor 594 conjugated goat anti-rabbit IgG (H+L) Ab, diluted at 1/600, was used as the secondary antibody.



Western Blotting

**Image 2.** Western blot analysis of extracts from NIH/3T3 cells, using ALS2CR11 antibody. The lane on the left is treated with the antigen-specific peptide.