



[Go to Product page](#)

Datasheet for ABIN6258707

## anti-CST11 antibody (Internal Region)

### 1 Image

#### Overview

Quantity:	100 µL
Target:	CST11
Binding Specificity:	Internal Region
Reactivity:	Human
Host:	Rabbit
Clonality:	Polyclonal
Conjugate:	This CST11 antibody is un-conjugated
Application:	ELISA, Western Blotting (WB), Immunofluorescence (IF), Immunocytochemistry (ICC)

#### Product Details

Immunogen:	A synthesized peptide derived from human CST11, corresponding to a region within the internal amino acids.
Isotype:	IgG
Specificity:	CST11 Antibody detects endogenous levels of total CST11.
Purification:	The antiserum was purified by peptide affinity chromatography using SulfoLink™ Coupling Resin (Thermo Fisher Scientific).

#### Target Details

Target:	CST11
Alternative Name:	CST11 ( <a href="#">CST11 Products</a> )

## Target Details

---

Background:	Description: Has antibacterial activity against the Gram-negative bacteria E.coli. May play a role in sperm maturation and fertilization. Gene: CST11
Molecular Weight:	17 kDa
Gene ID:	140880
UniProt:	<a href="#">Q9H112</a>

## Application Details

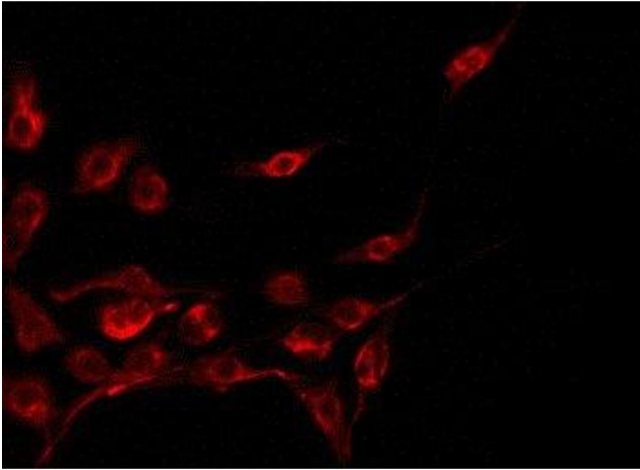
---

Application Notes:	WB 1:500-1:1000, IF/ICC 1:100-1:500, ELISA(peptide) 1:20000-1:40000
Restrictions:	For Research Use only

## Handling

---

Format:	Liquid
Concentration:	1 mg/mL
Buffer:	Rabbit IgG in phosphate buffered saline , pH 7.4, 150 mM NaCl, 0.02 % sodium azide and 50 % glycerol.
Preservative:	Sodium azide
Precaution of Use:	This product contains Sodium azide: a POISONOUS AND HAZARDOUS SUBSTANCE which should be handled by trained staff only.
Storage:	-20 °C
Storage Comment:	Store at -20 °C. Stable for 12 months from date of receipt.
Expiry Date:	12 months



#### Immunofluorescence (fixed cells)

**Image 1.** ABIN6275044 staining A549 by IF/ICC. The sample were fixed with PFA and permeabilized in 0.1% Triton X-100, then blocked in 10% serum for 45 minutes at 25°C. The primary antibody was diluted at 1/200 and incubated with the sample for 1 hour at 37°C. An Alexa Fluor 594 conjugated goat anti-rabbit IgG (H+L) Ab, diluted at 1/600, was used as the secondary antibody