

Datasheet for ABIN6258708  
**anti-CHRNA10 antibody (C-Term)**[Go to Product page](#)

## 3 Images

## Overview

Quantity:	100 µL
Target:	CHRNA10
Binding Specificity:	C-Term
Reactivity:	Human, Mouse, Rat
Host:	Rabbit
Clonality:	Polyclonal
Conjugate:	This CHRNA10 antibody is un-conjugated
Application:	Western Blotting (WB), ELISA, Immunocytochemistry (ICC), Immunofluorescence (IF)

## Product Details

Immunogen:	A synthesized peptide derived from human CHRNA10, corresponding to a region within C-terminal amino acids.
Isotype:	IgG
Specificity:	CHRNA10 Antibody detects endogenous levels of total CHRNA10.
Predicted Reactivity:	Pig,Bovine,Horse,Dog
Purification:	The antiserum was purified by peptide affinity chromatography using SulfoLink™ Coupling Resin (Thermo Fisher Scientific).

## Target Details

Target:	CHRNA10
---------	---------

## Target Details

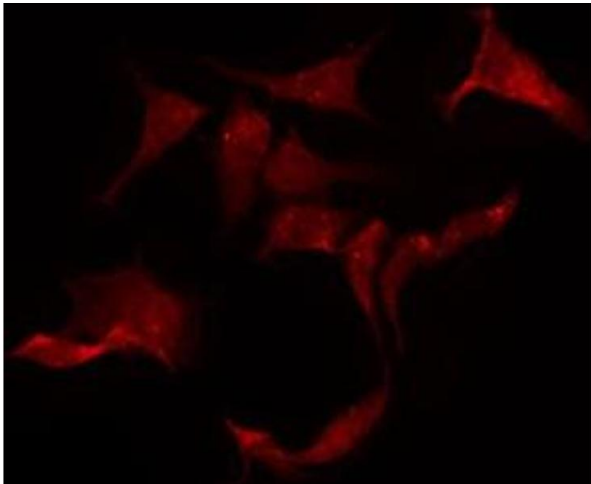
Alternative Name:	CHRNA10 ( <a href="#">CHRNA10 Products</a> )
Background:	<p>Description: Ionotropic receptor with a probable role in the modulation of auditory stimuli. Agonist binding may induce an extensive change in conformation that affects all subunits and leads to opening of an ion-conducting channel across the plasma membrane. The channel is permeable to a range of divalent cations including calcium, the influx of which may activate a potassium current which hyperpolarizes the cell membrane. In the ear, this may lead to a reduction in basilar membrane motion, altering the activity of auditory nerve fibers and reducing the range of dynamic hearing. This may protect against acoustic trauma.</p> <p>Gene: CHRNA10</p>
Molecular Weight:	50 kDa
Gene ID:	57053
UniProt:	<a href="#">Q9GZZ6</a>
Pathways:	<a href="#">Sensory Perception of Sound</a> , <a href="#">Synaptic Membrane</a>

## Application Details

Application Notes:	WB 1:500-1:1000, IF/ICC 1:100-1:500, ELISA(peptide) 1:20000-1:40000
Restrictions:	For Research Use only

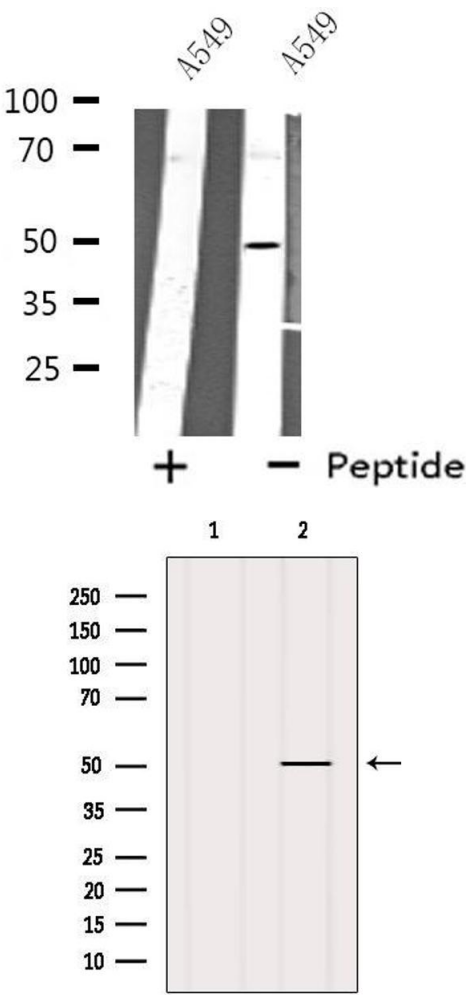
## Handling

Format:	Liquid
Concentration:	1 mg/mL
Buffer:	Rabbit IgG in phosphate buffered saline , pH 7.4, 150 mM NaCl, 0.02 % sodium azide and 50 % glycerol.
Preservative:	Sodium azide
Precaution of Use:	This product contains Sodium azide: a POISONOUS AND HAZARDOUS SUBSTANCE which should be handled by trained staff only.
Storage:	-20 °C
Storage Comment:	Store at -20 °C. Stable for 12 months from date of receipt.
Expiry Date:	12 months



**Immunofluorescence (fixed cells)**

**Image 1.** ABIN6275305 staining HeLa by IF/ICC. The sample were fixed with PFA and permeabilized in 0.1% Triton X-100, then blocked in 10% serum for 45 minutes at 25°C. The primary antibody was diluted at 1/200 and incubated with the sample for 1 hour at 37°C. An Alexa Fluor 594 conjugated goat anti-rabbit IgG (H+L) Ab, diluted at 1/600, was used as the secondary antibody



**Western Blotting**

**Image 2.** Western blot analysis of extracts from A549 cells using CHRNA10 antibody.

**Western Blotting**

**Image 3.** Western blot analysis of extracts from MCF7, using CHRNA10 Antibody. The lane on the left was treated with blocking peptide.