

Datasheet for ABIN6258711
anti-BIN2 antibody (Internal Region)

2 Images

[Go to Product page](#)

Overview

Quantity:	100 µL
Target:	BIN2
Binding Specificity:	Internal Region
Reactivity:	Human
Host:	Rabbit
Clonality:	Polyclonal
Conjugate:	This BIN2 antibody is un-conjugated
Application:	Western Blotting (WB), ELISA, Immunohistochemistry (IHC), Immunocytochemistry (ICC), Immunofluorescence (IF)

Product Details

Immunogen:	A synthesized peptide derived from human BIN2, corresponding to a region within the internal amino acids.
Isotype:	IgG
Specificity:	BIN2 Antibody detects endogenous levels of total BIN2.
Purification:	The antiserum was purified by peptide affinity chromatography using SulfoLink™ Coupling Resin (Thermo Fisher Scientific).

Target Details

Target:	BIN2
Alternative Name:	BIN2 (BIN2 Products)

Target Details

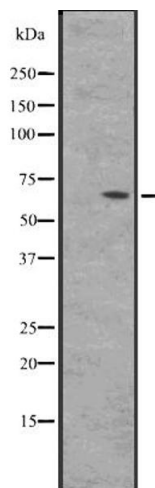
Background:	<p>Description: Promotes cell motility and migration, probably via its interaction with the cell membrane and with podosome proteins that mediate interaction with the cytoskeleton.</p> <p>Modulates membrane curvature and mediates membrane tubulation. Plays a role in podosome formation. Inhibits phagocytosis.</p> <p>Gene: BIN2</p>
Molecular Weight:	62 kDa
Gene ID:	51411
UniProt:	Q9UBW5

Application Details

Application Notes:	WB 1:500-1:2000, IHC 1:50-1:200, IF/ICC 1:100-1:500, ELISA(peptide) 1:20000-1:40000
Restrictions:	For Research Use only

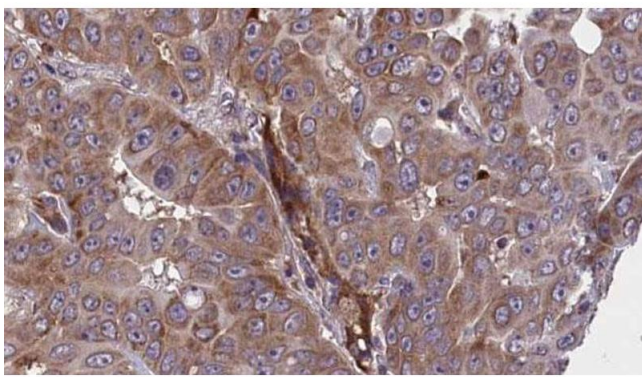
Handling

Format:	Liquid
Concentration:	1 mg/mL
Buffer:	Rabbit IgG in phosphate buffered saline, pH 7.4, 150 mM NaCl, 0.02 % sodium azide and 50 % glycerol.
Preservative:	Sodium azide
Precaution of Use:	This product contains Sodium azide: a POISONOUS AND HAZARDOUS SUBSTANCE which should be handled by trained staff only.
Storage:	-20 °C
Expiry Date:	12 months



Western Blotting

Image 1. Western blot analysis of BIN2 expression in HepG2 whole cell lysate. The lane on the left is treated with the antigen-specific peptide.



Immunohistochemistry

Image 2. ABIN6273609 at 1/100 staining Human liver cancer tissue by IHC-P. The sample was formaldehyde fixed and a heat mediated antigen retrieval step in citrate buffer was performed. The sample was then blocked and incubated with the antibody for 1.5 hours at 22°C. An HRP conjugated goat anti-rabbit antibody was used as the secondary.