



[Go to Product page](#)

Datasheet for ABIN6258717

anti-TTC23 antibody (Internal Region)

2 Images

Overview

Quantity:	100 µL
Target:	TTC23
Binding Specificity:	Internal Region
Reactivity:	Human, Mouse
Host:	Rabbit
Clonality:	Polyclonal
Conjugate:	This TTC23 antibody is un-conjugated
Application:	Western Blotting (WB), ELISA, Immunofluorescence (IF), Immunocytochemistry (ICC)

Product Details

Immunogen:	A synthesized peptide derived from human TTC23, corresponding to a region within the internal amino acids.
Isotype:	IgG
Specificity:	TTC23 Antibody detects endogenous levels of total TTC23.
Predicted Reactivity:	Pig,Bovine,Horse,Sheep,Dog
Purification:	The antiserum was purified by peptide affinity chromatography using SulfoLink™ Coupling Resin (Thermo Fisher Scientific).

Target Details

Target:	TTC23
---------	-------

Target Details

Alternative Name: TTC23 ([TTC23 Products](#))

Background: Gene: TTC23

Molecular Weight: 50 kDa

Gene ID: 64927

UniProt: [Q5W5X9](#)

Application Details

Application Notes: WB 1:500-1:1000, IF/ICC 1:100-1:500, ELISA(peptide) 1:20000-1:40000

Restrictions: For Research Use only

Handling

Format: Liquid

Concentration: 1 mg/mL

Buffer: Rabbit IgG in phosphate buffered saline , pH 7.4, 150 mM NaCl, 0.02 % sodium azide and 50 % glycerol.

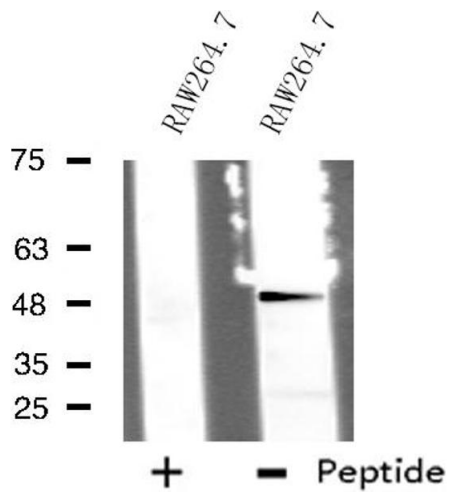
Preservative: Sodium azide

Precaution of Use: This product contains Sodium azide: a POISONOUS AND HAZARDOUS SUBSTANCE which should be handled by trained staff only.

Storage: -20 °C

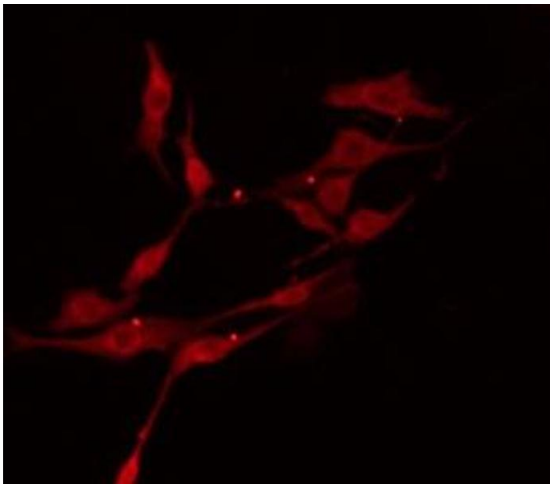
Storage Comment: Store at -20 °C. Stable for 12 months from date of receipt.

Expiry Date: 12 months



Western Blotting

Image 1. Western blot analysis of extracts from RAW264.7 cells, using TTC23 antibody.



Immunofluorescence (fixed cells)

Image 2. ABIN6274396 staining RAW264.7 by IF/ICC. The sample were fixed with PFA and permeabilized in 0.1% Triton X-100, then blocked in 10% serum for 45 minutes at 25°C. The primary antibody was diluted at 1/200 and incubated with the sample for 1 hour at 37°C. An Alexa Fluor 594 conjugated goat anti-rabbit IgG (H+L) Ab, diluted at 1/600, was used as the secondary antibody.