

Datasheet for ABIN6258722

anti-RPS4Y1 antibody

3 Images

[Go to Product page](#)

Overview

Quantity:	100 µL
Target:	RPS4Y1
Reactivity:	Human, Mouse
Host:	Rabbit
Clonality:	Polyclonal
Conjugate:	This RPS4Y1 antibody is un-conjugated
Application:	Western Blotting (WB), ELISA, Immunofluorescence (IF), Immunocytochemistry (ICC)

Product Details

Immunogen:	A synthesized peptide
Isotype:	IgG
Specificity:	RPS4Y1 Antibody detects endogenous levels of total RPS4Y1
Cross-Reactivity:	Human, Mouse (Murine)
Purification:	The antiserum was purified by peptide affinity chromatography using SulfoLink™ Coupling Resin (Thermo Fisher Scientific).

Target Details

Target:	RPS4Y1
Alternative Name:	RPS4Y1 (RPS4Y1 Products)
Background:	Gene: RPS4Y1

Target Details

Molecular Weight:	29 kDa
Gene ID:	6192
UniProt:	P22090

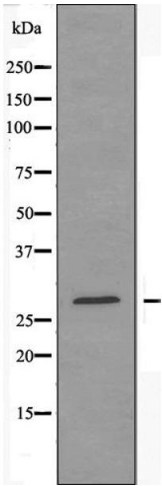
Application Details

Application Notes:	WB 1:500~1:1000 IF/ICC 1:100-1:500
Restrictions:	For Research Use only

Handling

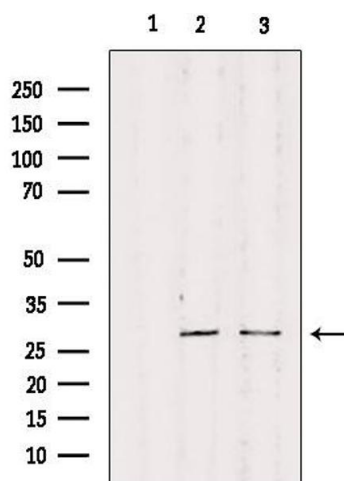
Format:	Liquid
Concentration:	1 mg/mL
Buffer:	Rabbit IgG in phosphate buffered saline , pH 7.4, 150 mM NaCl, 0.02 % sodium azide and 50 % glycerol.
Preservative:	Sodium azide
Precaution of Use:	This product contains Sodium azide: a POISONOUS AND HAZARDOUS SUBSTANCE which should be handled by trained staff only.
Storage:	-20 °C
Storage Comment:	Store at -20 °C.Stable for 12 months from date of receipt
Expiry Date:	12 months

Images



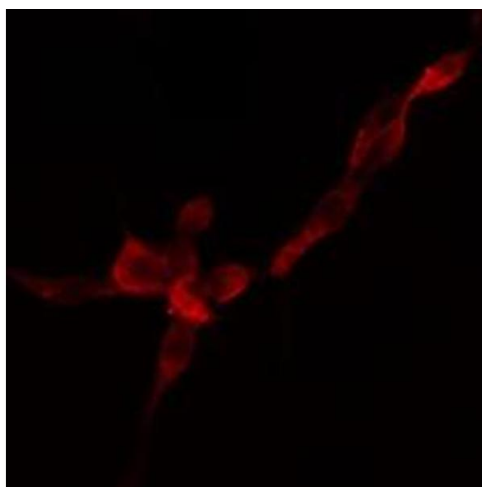
Western Blotting

Image 1. Western blot analysis of extracts from COLO cells using RPS4Y1 antibody.



Western Blotting

Image 2. Western blot analysis of extracts from various samples, using RPS4Y1 Antibody. Lane 1: Mouse cancer treated with blocking peptide. Lane 2: Mouse cancer; Lane 3: 293;



Immunofluorescence (fixed cells)

Image 3. ABIN6274757 staining HuvEc cells by IF/ICC. The sample were fixed with PFA and permeabilized in 0.1% Triton X-100, then blocked in 10% serum for 45 minutes at 25°C. The primary antibody was diluted at 1/200 and incubated with the sample for 1 hour at 37°C. An Alexa Fluor 594 conjugated goat anti-rabbit IgG (H+L) antibody (Cat.# S0006), diluted at 1/600, was used as secondary antibody.