

Datasheet for ABIN6258728

anti-14-3-3 gamma antibody (Internal Region)[Go to Product page](#)

4 Images

Overview

Quantity:	100 µL
Target:	14-3-3 gamma (YWHAG1)
Binding Specificity:	Internal Region
Reactivity:	Human, Mouse, Rat
Host:	Rabbit
Clonality:	Polyclonal
Conjugate:	This 14-3-3 gamma antibody is un-conjugated
Application:	Western Blotting (WB), ELISA, Immunohistochemistry (IHC), Immunofluorescence (IF), Immunocytochemistry (ICC)

Product Details

Immunogen:	A synthesized peptide derived from human 14-3-3 gamma, corresponding to a region within the internal amino acids.
Isotype:	IgG
Specificity:	14-3-3 gamma Antibody detects endogenous levels of total 14-3-3 gamma.
Predicted Reactivity:	Pig,Bovine,Horse,Rabbit,Dog,Chicken,Xenopus
Purification:	The antiserum was purified by peptide affinity chromatography using SulfoLink™ Coupling Resin (Thermo Fisher Scientific).

Target Details

Target:	14-3-3 gamma (YWHAG1)
---------	-----------------------

Target Details

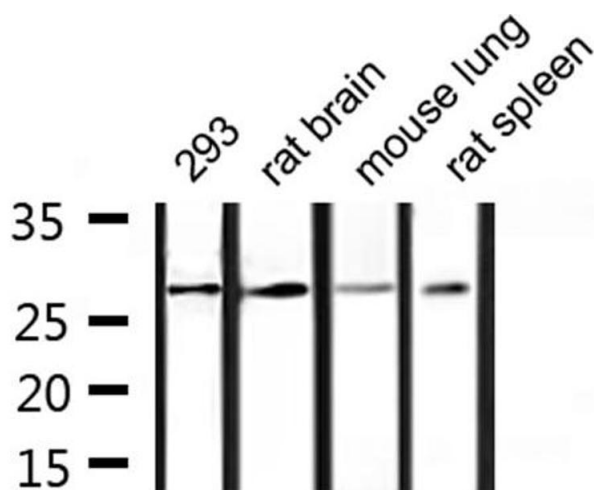
Alternative Name:	YWHAG (YWHAG1 Products)
Background:	<p>Description: Adapter protein implicated in the regulation of a large spectrum of both general and specialized signaling pathways. Binds to a large number of partners, usually by recognition of a phosphoserine or phosphothreonine motif. Binding generally results in the modulation of the activity of the binding partner.</p> <p>Gene: YWHAG</p>
Molecular Weight:	28 kDa
Gene ID:	7532
UniProt:	P61981
Pathways:	Myometrial Relaxation and Contraction, M Phase

Application Details

Application Notes:	WB 1:500-1:1000, IHC: 1:50-1:200, IF/ICC 1:100-1:500, ELISA(peptide) 1:20000-1:40000
Restrictions:	For Research Use only

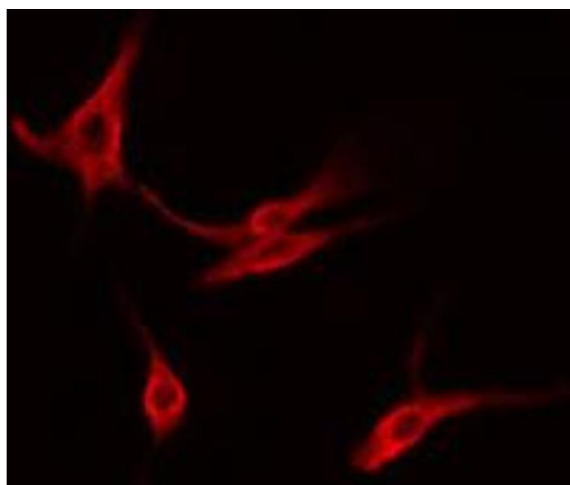
Handling

Format:	Liquid
Concentration:	1 mg/mL
Buffer:	Rabbit IgG in phosphate buffered saline , pH 7.4, 150 mM NaCl, 0.02 % sodium azide and 50 % glycerol.
Preservative:	Sodium azide
Precaution of Use:	This product contains Sodium azide: a POISONOUS AND HAZARDOUS SUBSTANCE which should be handled by trained staff only.
Storage:	-20 °C
Storage Comment:	Store at -20 °C. Stable for 12 months from date of receipt.
Expiry Date:	12 months



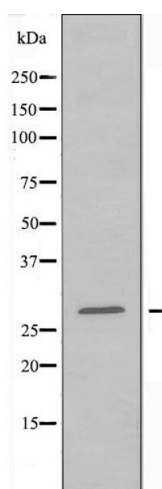
Western Blotting

Image 1. Western blot analysis of extracts from 293, rat brain, mouse lung, rat spleen, using 14-3-3 γ Antibody.



Immunofluorescence (fixed cells)

Image 2. ABIN6274565 staining HeLa cells by IF/ICC. The sample were fixed with PFA and permeabilized in 0.1% Triton X-100, then blocked in 10% serum for 45 minutes at 25°C. The primary antibody was diluted at 1/200 and incubated with the sample for 1 hour at 37°C. An Alexa Fluor 594 conjugated goat anti-rabbit IgG (H+L) antibody (Cat.# S0006), diluted at 1/600, was used as secondary antibody.



Western Blotting

Image 3. Western blot analysis of extracts from K562 cells, treated with insulin (0.01U/ml, 15mins), using 14-3-3 γ antibody.

Please check the [product details page](#) for more images. Overall 4 images are available for ABIN6258728.