



[Go to Product page](#)

Datasheet for ABIN6258767
anti-ELAVL2 antibody (N-Term)

3 Images

Overview

Quantity:	100 µL
Target:	ELAVL2
Binding Specificity:	N-Term
Reactivity:	Human, Mouse, Rat
Host:	Rabbit
Clonality:	Polyclonal
Conjugate:	This ELAVL2 antibody is un-conjugated
Application:	Western Blotting (WB), ELISA, Immunohistochemistry (IHC), Immunofluorescence (IF), Immunocytochemistry (ICC)

Product Details

Immunogen:	A synthesized peptide derived from human ELAVL2, corresponding to a region within N-terminal amino acids.
Isotype:	IgG
Specificity:	ELAVL2 Antibody detects endogenous levels of total ELAVL2.
Predicted Reactivity:	Pig,Bovine,Horse,Sheep,Rabbit,Dog,Chicken,Xenopus
Purification:	The antiserum was purified by peptide affinity chromatography using SulfoLink™ Coupling Resin (Thermo Fisher Scientific).

Target Details

Target:	ELAVL2
---------	--------

Target Details

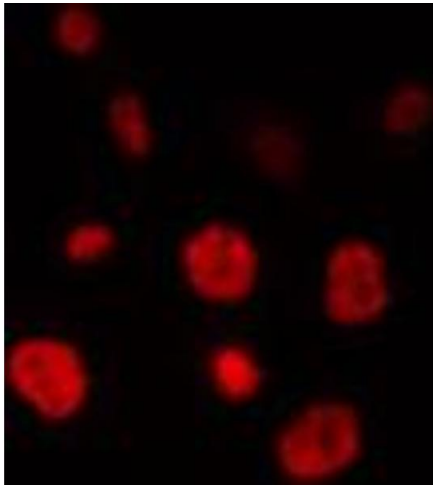
Alternative Name:	ELAVL2 (ELAVL2 Products)
Background:	Description: Binds RNA. Seems to recognize a GAAA motif. Can bind to its own 3'-UTR, the FOS 3'-UTR and the ID 3'-UTR. Gene: ELAVL2
Molecular Weight:	38 kDa
Gene ID:	1993
UniProt:	Q12926

Application Details

Application Notes:	WB 1:500-1:1000, IF/ICC 1:100-1:500, IHC 1:50-1:200, ELISA(peptide) 1:20000-1:40000
Restrictions:	For Research Use only

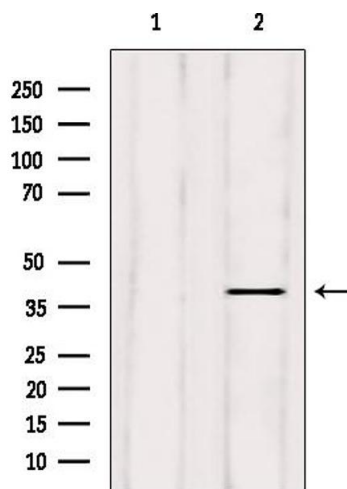
Handling

Format:	Liquid
Concentration:	1 mg/mL
Buffer:	Rabbit IgG in phosphate buffered saline , pH 7.4, 150 mM NaCl, 0.02 % sodium azide and 50 % glycerol.
Preservative:	Sodium azide
Precaution of Use:	This product contains Sodium azide: a POISONOUS AND HAZARDOUS SUBSTANCE which should be handled by trained staff only.
Storage:	-20 °C
Storage Comment:	Store at -20 °C. Stable for 12 months from date of receipt.
Expiry Date:	12 months



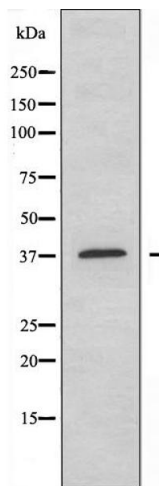
Immunofluorescence (fixed cells)

Image 1. ABIN6274328 staining HepG2 cells by IF/ICC. The sample were fixed with PFA and permeabilized in 0.1% Triton X-100, then blocked in 10% serum for 45 minutes at 25°C. The primary antibody was diluted at 1/200 and incubated with the sample for 1 hour at 37°C. An Alexa Fluor 594 conjugated goat anti-rabbit IgG (H+L) antibody (Cat.# S0006), diluted at 1/600, was used as secondary antibody.



Western Blotting

Image 2. Western blot analysis of extracts from mouse brain, using ELAVL2 Antibody. Lane 1 was treated with the blocking peptide.



Western Blotting

Image 3. Western blot analysis of extracts from HepG2 cells using ELAVL2 antibody.