

Datasheet for ABIN6258774
anti-EPH Receptor A6 antibody[Go to Product page](#)

2 Images

Overview

Quantity:	100 µL
Target:	EPH Receptor A6 (Epha6)
Reactivity:	Human, Mouse, Rat
Host:	Rabbit
Clonality:	Polyclonal
Conjugate:	This EPH Receptor A6 antibody is un-conjugated
Application:	ELISA, Immunohistochemistry (IHC), Immunofluorescence (IF), Immunocytochemistry (ICC)

Product Details

Immunogen:	A synthesized peptide
Isotype:	IgG
Specificity:	EPHA6 Antibody detects endogenous levels of total EPHA6
Cross-Reactivity:	Human, Mouse (Murine), Rat (Rattus)
Purification:	The antiserum was purified by peptide affinity chromatography using SulfoLink™ Coupling Resin (Thermo Fisher Scientific).

Target Details

Target:	EPH Receptor A6 (Epha6)
Alternative Name:	EPHA6 (Epha6 Products)
Background:	Description: Receptor tyrosine kinase which binds promiscuously GPI-anchored ephrin-A family

Target Details

ligands residing on adjacent cells, leading to contact-dependent bidirectional signaling into neighboring cells. The signaling pathway downstream of the receptor is referred to as forward signaling while the signaling pathway downstream of the ephrin ligand is referred to as reverse signaling (By similarity).

Gene: EPHA6

Molecular Weight: 0 kDa

Gene ID: 285220

UniProt: [Q9UF33](#)

Pathways: [RTK Signaling](#)

Application Details

Application Notes: IHC: 1:50~1:200 IF/ICC 1:100-1:500

Restrictions: For Research Use only

Handling

Format: Liquid

Concentration: 1 mg/mL

Buffer: Rabbit IgG in phosphate buffered saline , pH 7.4, 150 mM NaCl, 0.02 % sodium azide and 50 % glycerol.

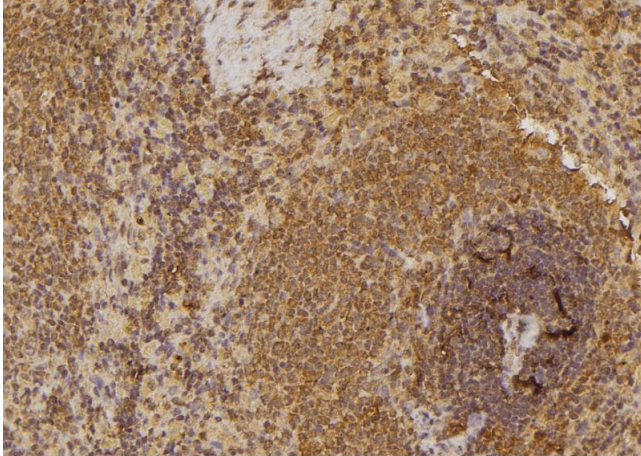
Preservative: Sodium azide

Precaution of Use: This product contains Sodium azide: a POISONOUS AND HAZARDOUS SUBSTANCE which should be handled by trained staff only.

Storage: -20 °C

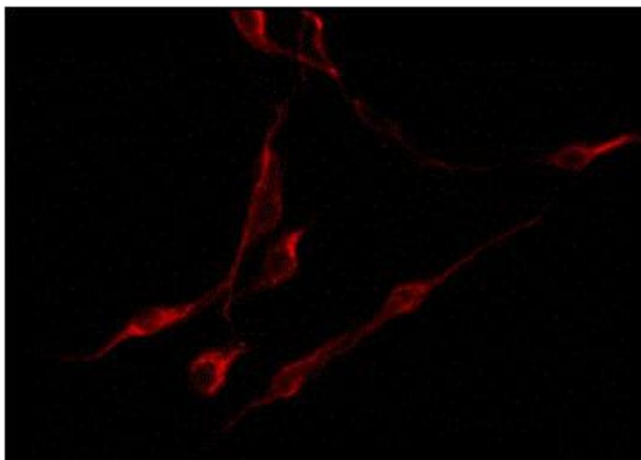
Storage Comment: Store at -20 °C.Stable for 12 months from date of receipt

Expiry Date: 12 months



Immunohistochemistry

Image 1. ABIN6274538 at 1/100 staining Rat spleen tissue by IHC-P. The sample was formaldehyde fixed and a heat mediated antigen retrieval step in citrate buffer was performed. The sample was then blocked and incubated with the antibody for 1.5 hours at 22°C. An HRP conjugated goat anti-rabbit antibody was used as the secondary.



Immunofluorescence (fixed cells)

Image 2. ABIN6274538 staining U87 by IF/ICC. The sample were fixed with PFA and permeabilized in 0.1% Triton X-100, then blocked in 10% serum for 45 minutes at 25°C. The primary antibody was diluted at 1/200 and incubated with the sample for 1 hour at 37°C. An Alexa Fluor 594 conjugated goat anti-rabbit IgG (H+L) Ab, diluted at 1/600, was used as the secondary antibody.