

Datasheet for ABIN6258821

anti-HKR1 antibody

3 Images

[Go to Product page](#)

Overview

Quantity:	100 µL
Target:	HKR1
Reactivity:	Human, Mouse
Host:	Rabbit
Clonality:	Polyclonal
Conjugate:	This HKR1 antibody is un-conjugated
Application:	Western Blotting (WB), ELISA, Immunofluorescence (IF), Immunocytochemistry (ICC)

Product Details

Immunogen:	A synthesized peptide
Isotype:	IgG
Specificity:	HKR1 Antibody detects endogenous levels of total HKR1
Cross-Reactivity:	Human, Mouse (Murine)
Purification:	The antiserum was purified by peptide affinity chromatography using SulfoLink™ Coupling Resin (Thermo Fisher Scientific).

Target Details

Target:	HKR1
Alternative Name:	HKR1 (HKR1 Products)
Background:	Description: May be involved in transcriptional regulation.

Target Details

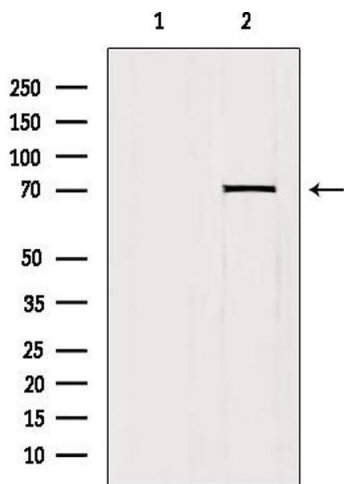
	Gene: HKR1
Molecular Weight:	73 kDa
Gene ID:	284459
UniProt:	P10072

Application Details

Application Notes:	WB 1:500~1:1000 IF/ICC 1:100-1:500
Restrictions:	For Research Use only

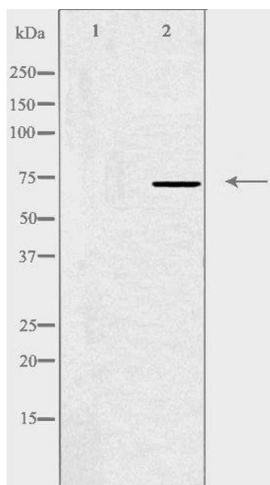
Handling

Format:	Liquid
Concentration:	1 mg/mL
Buffer:	Rabbit IgG in phosphate buffered saline , pH 7.4, 150 mM NaCl, 0.02 % sodium azide and 50 % glycerol.
Preservative:	Sodium azide
Precaution of Use:	This product contains Sodium azide: a POISONOUS AND HAZARDOUS SUBSTANCE which should be handled by trained staff only.
Storage:	-20 °C
Storage Comment:	Store at -20 °C.Stable for 12 months from date of receipt
Expiry Date:	12 months



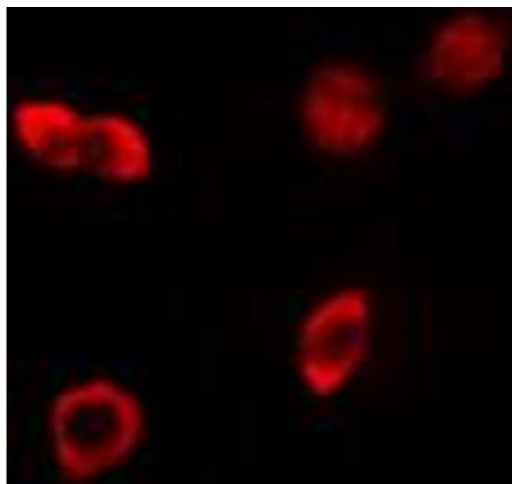
Western Blotting

Image 1. Western blot analysis of extracts from mouse brain, using HKR1 Antibody. Lane 1 was treated with the blocking peptide.



Western Blotting

Image 2. Western blot analysis of extracts from HeLa cells using HKR1 antibody.



Immunofluorescence (fixed cells)

Image 3. ABIN6274163 staining HeLa cells by IF/ICC. The sample were fixed with PFA and permeabilized in 0.1% Triton X-100, then blocked in 10% serum for 45 minutes at 25°C. The primary antibody was diluted at 1/200 and incubated with the sample for 1 hour at 37°C. An Alexa Fluor 594 conjugated goat anti-rabbit IgG (H+L) antibody (Cat.# S0006), diluted at 1/600, was used as secondary antibody.