

Datasheet for ABIN6258824

anti-GNRHR2 antibody**3** Images[Go to Product page](#)

Overview

Quantity:	100 µL
Target:	GNRHR2
Reactivity:	Human, Mouse
Host:	Rabbit
Clonality:	Polyclonal
Conjugate:	This GNRHR2 antibody is un-conjugated
Application:	Western Blotting (WB), ELISA, Immunohistochemistry (IHC)

Product Details

Immunogen:	A synthesized peptide
Isotype:	IgG
Specificity:	GNRHR2 antibody detects endogenous levels of total GNRHR2
Cross-Reactivity:	Human, Mouse (Murine)
Purification:	The antiserum was purified by peptide affinity chromatography using SulfoLink™ Coupling Resin (Thermo Fisher Scientific).

Target Details

Target:	GNRHR2
Alternative Name:	GNRHR2 (GNRHR2 Products)
Background:	Description: Putative receptor for gonadotropin releasing hormone II (GnRH II) which is most

Target Details

	probably non-functional.
	Gene: GNRHR2
Molecular Weight:	42 kDa
UniProt:	Q96P88

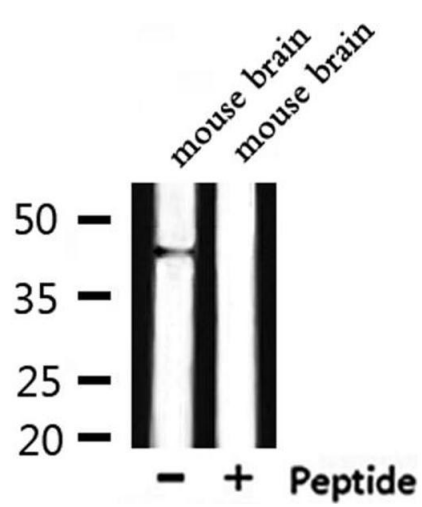
Application Details

Application Notes:	WB 1:500-1:2000 IHC 1:50-1:200
Restrictions:	For Research Use only

Handling

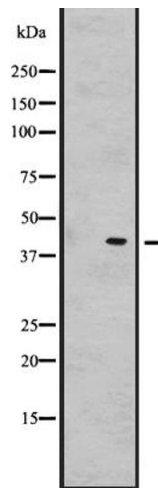
Format:	Liquid
Concentration:	1 mg/mL
Buffer:	Rabbit IgG in phosphate buffered saline, pH 7.4, 150 mM NaCl, 0.02 % sodium azide and 50 % glycerol.
Preservative:	Sodium azide
Precaution of Use:	This product contains Sodium azide: a POISONOUS AND HAZARDOUS SUBSTANCE which should be handled by trained staff only.

Images



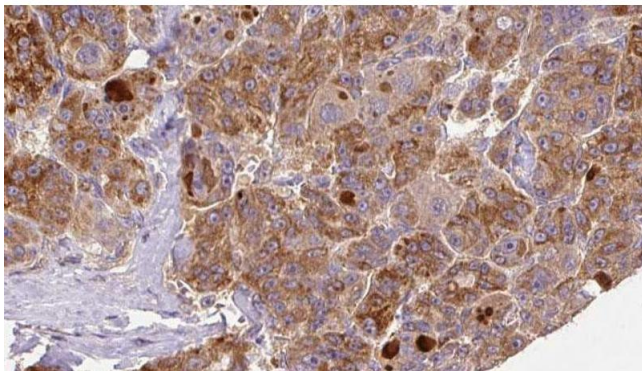
Western Blotting

Image 1. Western blot analysis of extracts from mouse brain, using GNRHR2 Antibody.



Western Blotting

Image 2. Western blot analysis of GNRHR2 expression in HeLa cell lysate. The lane on the left is treated with the antigen-specific peptide.



Immunohistochemistry

Image 3. ABIN6273925 at 1/100 staining Human liver cancer tissue by IHC-P. The sample was formaldehyde fixed and a heat mediated antigen retrieval step in citrate buffer was performed. The sample was then blocked and incubated with the antibody for 1.5 hours at 22°C. An HRP conjugated goat anti-rabbit antibody was used as the secondary.