



Datasheet for ABIN6258829
anti-NPSR1 antibody (Internal Region)



[Go to Product page](#)

1 Image

Overview

Quantity:	100 µL
Target:	NPSR1
Binding Specificity:	Internal Region
Reactivity:	Human, Mouse, Rat
Host:	Rabbit
Clonality:	Polyclonal
Conjugate:	This NPSR1 antibody is un-conjugated
Application:	ELISA, Western Blotting (WB), Immunocytochemistry (ICC), Immunofluorescence (IF)

Product Details

Immunogen:	A synthesized peptide derived from human NPSR1, corresponding to a region within the internal amino acids.
Isotype:	IgG
Specificity:	NPSR1 Antibody detects endogenous levels of total NPSR1.
Predicted Reactivity:	Pig,Bovine,Horse,Sheep,Rabbit,Dog
Purification:	The antiserum was purified by peptide affinity chromatography using SulfoLink™ Coupling Resin (Thermo Fisher Scientific).

Target Details

Target:	NPSR1
---------	-------

Target Details

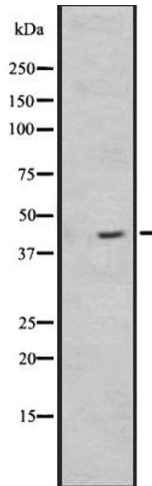
Alternative Name:	NPSR1 (NPSR1 Products)
Background:	Description: G-protein coupled receptor for neuropeptide S (NPS) (PubMed:16790440). Promotes mobilization of intracellular Ca ²⁺ stores (PubMed:16790440). Inhibits cell growth in response to NPS binding (PubMed:15947423). Involved in pathogenesis of asthma and other IgE-mediated diseases. Gene: NPSR1
Molecular Weight:	43 kDa,
Gene ID:	387129
UniProt:	Q6W5P4

Application Details

Application Notes:	WB 1:500-1:2000, IF/ICC 1:100-1:500, ELISA(peptide) 1:20000-1:40000
Restrictions:	For Research Use only

Handling

Format:	Liquid
Concentration:	1 mg/mL
Buffer:	Rabbit IgG in phosphate buffered saline, pH 7.4, 150 mM NaCl, 0.02 % sodium azide and 50 % glycerol.
Preservative:	Sodium azide
Precaution of Use:	This product contains Sodium azide: a POISONOUS AND HAZARDOUS SUBSTANCE which should be handled by trained staff only.
Storage:	-20 °C
Expiry Date:	12 months



Western Blotting

Image 1. Western blot analysis of NPSR1 expression in HEK293 cells ,The lane on the left is treated with the antigen-specific peptide.