

Datasheet for ABIN6258833 anti-GPRC6A antibody (Internal Region)

[Go to Product page](#)

1 Image

Overview

Quantity:	100 µL
Target:	GPRC6A
Binding Specificity:	Internal Region
Reactivity:	Human
Host:	Rabbit
Clonality:	Polyclonal
Conjugate:	This GPRC6A antibody is un-conjugated
Application:	Western Blotting (WB), ELISA, Immunofluorescence (IF), Immunocytochemistry (ICC)

Product Details

Immunogen:	A synthesized peptide derived from human GPRC6A, corresponding to a region within the internal amino acids.
Isotype:	IgG
Specificity:	GPRC6A Antibody detects endogenous levels of total GPRC6A.
Predicted Reactivity:	Pig,Bovine,Horse,Rabbit,Dog,Chicken
Purification:	The antiserum was purified by peptide affinity chromatography using SulfoLink™ Coupling Resin (Thermo Fisher Scientific).

Target Details

Target:	GPRC6A
---------	--------

Target Details

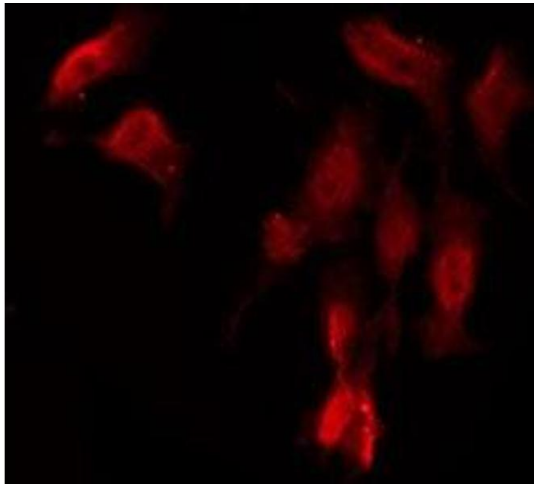
Alternative Name:	GPRC6A (GPRC6A Products)
Background:	<p>Description: Receptor activated by amino acids with a preference for basic amino acids such as L-Lys, L-Arg and L-ornithine but also by small and polar amino acids. The L-alpha amino acids respond is augmented by divalent cations Ca²⁺ and Mg²⁺. Activated by extracellular calcium and osteocalcin. Seems to act through a G(q)/G(11) and G(i)-coupled pathway. Mediates the non-genomic effects of androgens in multiple tissue. May coordinate nutritional and hormonal anabolic signals through the sensing of extracellular amino acids, osteocalcin, divalent ions and its responsiveness to anabolic steroids.</p> <p>Gene: GPRC6A</p>
Molecular Weight:	105 kDa
Gene ID:	222545
UniProt:	Q5T6X5

Application Details

Application Notes:	WB 1:500-1:1000, IF/ICC 1:100-1:500, ELISA(peptide) 1:20000-1:40000
Restrictions:	For Research Use only

Handling

Format:	Liquid
Concentration:	1 mg/mL
Buffer:	Rabbit IgG in phosphate buffered saline , pH 7.4, 150 mM NaCl, 0.02 % sodium azide and 50 % glycerol.
Preservative:	Sodium azide
Precaution of Use:	This product contains Sodium azide: a POISONOUS AND HAZARDOUS SUBSTANCE which should be handled by trained staff only.
Storage:	-20 °C
Storage Comment:	Store at -20 °C. Stable for 12 months from date of receipt.
Expiry Date:	12 months



Immunofluorescence (fixed cells)

Image 1. ABIN6276026 staining HeLa by IF/ICC. The sample were fixed with PFA and permeabilized in 0.1% Triton X-100, then blocked in 10% serum for 45 minutes at 25°C. The primary antibody was diluted at 1/200 and incubated with the sample for 1 hour at 37°C. An Alexa Fluor 594 conjugated goat anti-rabbit IgG (H+L) Ab, diluted at 1/600, was used as the secondary antibody.