



Datasheet for ABIN6258840  
**anti-HCRTR1 antibody (C-Term)**



[Go to Product page](#)

1 Image

Overview

Quantity:	100 µL
Target:	HCRTR1
Binding Specificity:	C-Term
Reactivity:	Human, Rat, Mouse
Host:	Rabbit
Clonality:	Polyclonal
Conjugate:	This HCRTR1 antibody is un-conjugated
Application:	ELISA, Western Blotting (WB), Immunohistochemistry (IHC)

Product Details

Immunogen:	A synthesized peptide derived from human HCRTR1, corresponding to a region within C-terminal amino acids.
Isotype:	IgG
Specificity:	HCRTR1 Antibody detects endogenous levels of total HCRTR1.
Predicted Reactivity:	Pig,Bovine,Horse,Sheep,Dog
Purification:	The antiserum was purified by peptide affinity chromatography using SulfoLink™ Coupling Resin (Thermo Fisher Scientific).

Target Details

Target:	HCRTR1
---------	--------

## Target Details

---

Alternative Name:	<a href="#">HCRTR1 (HCRTR1 Products)</a>
Background:	Description: Moderately selective excitatory receptor for orexin-A and, with a lower affinity, for orexin-B neuropeptide (PubMed:9491897, PubMed:26950369). Triggers an increase in cytoplasmic Ca <sup>2+</sup> levels in response to orexin-A binding (PubMed:9491897, PubMed:26950369). Gene: HCRTR1
Molecular Weight:	50 kDa
Gene ID:	3061
UniProt:	<a href="#">O43613</a>
Pathways:	<a href="#">Feeding Behaviour</a>

## Application Details

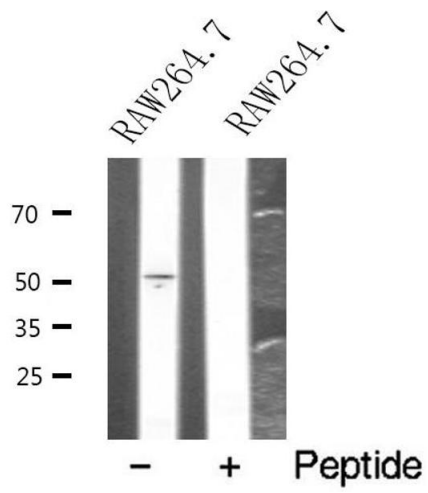
---

Application Notes:	WB 1:500-1:1000, IHC 1:50-1:200, ELISA(peptide) 1:20000-1:40000
Restrictions:	For Research Use only

## Handling

---

Format:	Liquid
Concentration:	1 mg/mL
Buffer:	Rabbit IgG in phosphate buffered saline , pH 7.4, 150 mM NaCl, 0.02 % sodium azide and 50 % glycerol.
Preservative:	Sodium azide
Precaution of Use:	This product contains Sodium azide: a POISONOUS AND HAZARDOUS SUBSTANCE which should be handled by trained staff only.
Storage:	-20 °C
Storage Comment:	Store at -20 °C. Stable for 12 months from date of receipt.
Expiry Date:	12 months



### Western Blotting

**Image 1.** Western blot analysis of extracts from RAW264.7 cells, using HCRTR1 antibody.