



[Go to Product page](#)

Datasheet for ABIN6258864
anti-KDM3B antibody (Internal Region)

1 Image

Overview

Quantity:	100 µL
Target:	KDM3B
Binding Specificity:	Internal Region
Reactivity:	Human, Mouse
Host:	Rabbit
Clonality:	Polyclonal
Conjugate:	This KDM3B antibody is un-conjugated
Application:	Western Blotting (WB), ELISA, Immunofluorescence (IF), Immunocytochemistry (ICC)

Product Details

Immunogen:	A synthesized peptide derived from human JMJD1B, corresponding to a region within the internal amino acids.
Isotype:	IgG
Specificity:	JMJD1B Antibody detects endogenous levels of total JMJD1B.
Predicted Reactivity:	Pig,Bovine,Horse,Sheep,Rabbit,Dog,Chicken
Purification:	The antiserum was purified by peptide affinity chromatography using SulfoLink™ Coupling Resin (Thermo Fisher Scientific).

Target Details

Target:	KDM3B
---------	-------

Target Details

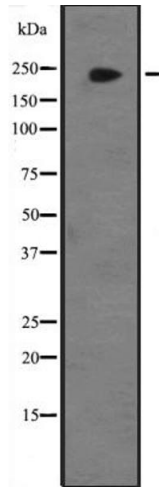
Alternative Name:	KDM3B (KDM3B Products)
Background:	Description: Histone demethylase that specifically demethylates 'Lys-9' of histone H3, thereby playing a central role in histone code. Demethylation of Lys residue generates formaldehyde and succinate. May have tumor suppressor activity. Gene: KDM3B
Molecular Weight:	240 kDa
Gene ID:	51780
UniProt:	Q7LBC6
Pathways:	Warburg Effect

Application Details

Application Notes:	WB 1:500-1:2000, IF/ICC 1:100-1:500, ELISA(peptide) 1:20000-1:40000
Restrictions:	For Research Use only

Handling

Format:	Liquid
Concentration:	1 mg/mL
Buffer:	Rabbit IgG in phosphate buffered saline, pH 7.4, 150 mM NaCl, 0.02 % sodium azide and 50 % glycerol.
Preservative:	Sodium azide
Precaution of Use:	This product contains Sodium azide: a POISONOUS AND HAZARDOUS SUBSTANCE which should be handled by trained staff only.
Storage:	-20 °C
Expiry Date:	12 months



Western Blotting

Image 1. Western blot analysis of JMJD1B expression in HeLa cell lysate, The lane on the left is treated with the antigen-specific peptide.