

Datasheet for ABIN625887

anti-HSPG antibody**2** Images[Go to Product page](#)

Overview

Quantity:	50 µg
Target:	HSPG
Reactivity:	Human, Cow, Mouse, Rat
Host:	Rat
Clonality:	Monoclonal
Application:	Western Blotting (WB), Immunohistochemistry (IHC), Immunohistochemistry (Paraffin-embedded Sections) (IHC (p)), Immunoprecipitation (IP), Immunocytochemistry (ICC), Immunohistochemistry (Frozen Sections) (IHC (fro))

Product Details

Brand:	IHC-plus™
Immunogen:	Heparan Sulfate Proteoglycan, Large. Type of Immunogen: Protein
Isotype:	IgG2a
Specificity:	Recognizes human Heparan Sulfate Proteoglycan, Large Species cross-reactivity: mouse, rat, and bovine.
Purification:	Purified

Target Details

Target:	HSPG
---------	------

Target Details

Alternative Name: Heparan Sulfate Proteoglycan ([HSPG Products](#))

Application Details

Application Notes: Approved: ICC, IHC, IHC-Fr (1:25 - 1:200), IHC-P (10 - 20 µg/mL), IP, WB (1:100 - 1:1000)

Usage: Suitable for use in Immunohistochemistry, Western Blot, Immunoprecipitation and Immunocytochemistry. Western Blot: 1:100-1:1000. Immunohistochemistry (frozen and paraffin sections): 1:25-1:200 with avidin-biotinylated horseradish peroxidase complex (ABC) as a detecting reagent. Optimum dilutions to be determined by researcher. Hybridoma: X63Ag8.653 mouse myeloma cells with spleen cells from a Fisher rat.

Restrictions: For Research Use only

Handling

Format: Liquid

Concentration: Lot specific

Buffer: PBS, 0.09 % sodium azide

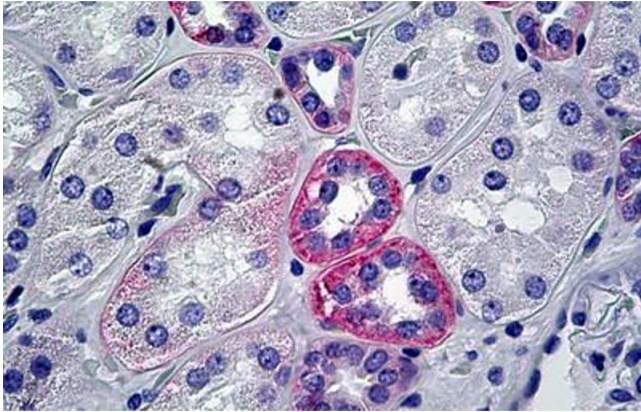
Preservative: Sodium azide

Precaution of Use: This product contains Sodium azide: a POISONOUS AND HAZARDOUS SUBSTANCE which should be handled by trained staff only.

Handling Advice: Aliquot to Avoid repeated freezing and thawing.

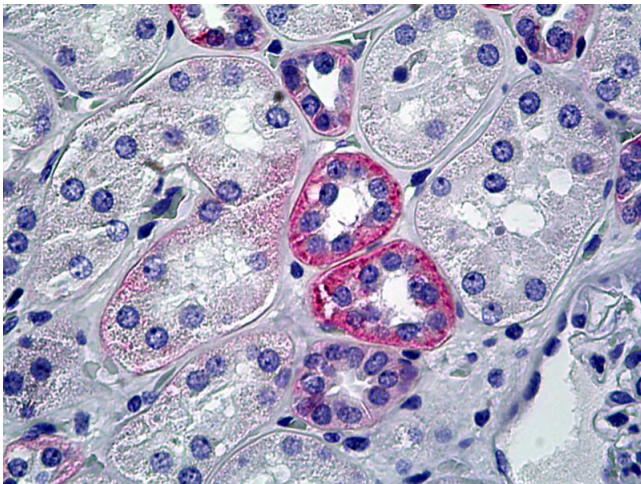
Storage: 4 °C,-20 °C

Storage Comment: May be stored at 4°C for short-term only. Aliquot to avoid freeze-thaw cycles. Store at -20°C. Aliquots are stable for at least 1 year.



Immunohistochemistry (Formalin-fixed Paraffin-embedded Sections)

Image 1. Human Kidney: Formalin-Fixed, Paraffin-Embedded (FFPE)



Immunohistochemistry

Image 2. Anti-Heparan Sulfate Proteoglycan antibody IHC of human kidney. Immunohistochemistry of formalin-fixed, paraffin-embedded tissue after heat-induced antigen retrieval. Antibody concentration 10 ug/ml.