

Datasheet for ABIN6258870 anti-Kallikrein 12 antibody (Internal Region)

[Go to Product page](#)

2 Images

Overview

Quantity:	100 µL
Target:	Kallikrein 12 (KLK12)
Binding Specificity:	Internal Region
Reactivity:	Human
Host:	Rabbit
Clonality:	Polyclonal
Conjugate:	This Kallikrein 12 antibody is un-conjugated
Application:	Western Blotting (WB), ELISA, Immunohistochemistry (IHC)

Product Details

Immunogen:	A synthesized peptide derived from human KLK12, corresponding to a region within the internal amino acids.
Isotype:	IgG
Specificity:	KLK12 Antibody detects endogenous levels of total KLK12.
Predicted Reactivity:	Pig,Horse
Purification:	The antiserum was purified by peptide affinity chromatography using SulfoLink™ Coupling Resin (Thermo Fisher Scientific).

Target Details

Target:	Kallikrein 12 (KLK12)
---------	-----------------------

Target Details

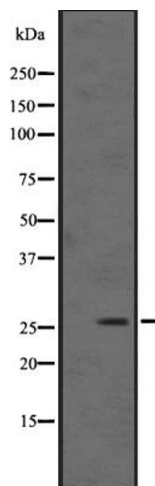
Alternative Name:	KLK12 (KLK12 Products)
Background:	Gene: KLK12
Molecular Weight:	27 kDa
Gene ID:	43849
UniProt:	Q9UKR0
Pathways:	Complement System

Application Details

Application Notes:	WB 1:500-1:2000, IHC 1:50-1:200, ELISA(peptide) 1:20000-1:40000
Restrictions:	For Research Use only

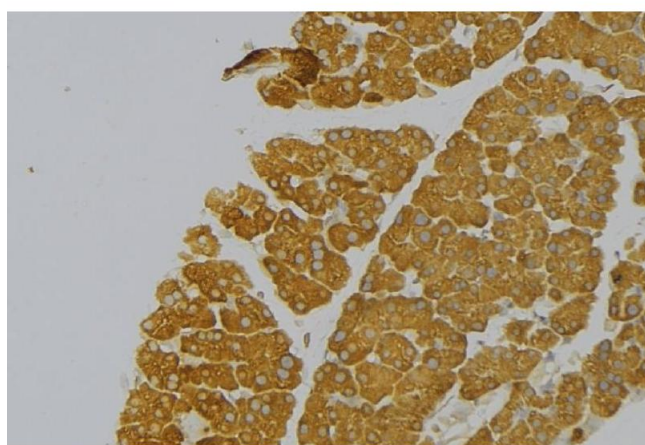
Handling

Format:	Liquid
Concentration:	1 mg/mL
Buffer:	Rabbit IgG in phosphate buffered saline, pH 7.4, 150 mM NaCl, 0.02 % sodium azide and 50 % glycerol.
Preservative:	Sodium azide
Precaution of Use:	This product contains Sodium azide: a POISONOUS AND HAZARDOUS SUBSTANCE which should be handled by trained staff only.
Storage:	-20 °C
Expiry Date:	12 months



Western Blotting

Image 1. Western blot analysis of KLK12 expression in WiDr cell line lysates „The lane on the left is treated with the antigen-specific peptide.



Immunohistochemistry

Image 2. ABIN6273833 at 1/100 staining Human pancreas tissue by IHC-P. The sample was formaldehyde fixed and a heat mediated antigen retrieval step in citrate buffer was performed. The sample was then blocked and incubated with the antibody for 1.5 hours at 22°C. An HRP conjugated goat anti-rabbit antibody was used as the secondary