



[Go to Product page](#)

Datasheet for ABIN6258894  
**anti-RAD23A antibody (C-Term)**

1 Image

Overview

Quantity:	100 µL
Target:	RAD23A
Binding Specificity:	C-Term
Reactivity:	Human, Mouse
Host:	Rabbit
Clonality:	Polyclonal
Conjugate:	This RAD23A antibody is un-conjugated
Application:	Western Blotting (WB), ELISA

Product Details

Immunogen:	A synthesized peptide derived from human RAD23A, corresponding to a region within C-terminal amino acids.
Isotype:	IgG
Specificity:	RAD23A Antibody detects endogenous levels of total RAD23A.
Predicted Reactivity:	Pig,Bovine,Horse,Sheep,Dog,Chicken
Purification:	The antiserum was purified by peptide affinity chromatography using SulfoLink™ Coupling Resin (Thermo Fisher Scientific).

Target Details

Target:	RAD23A
---------	--------

## Target Details

---

Alternative Name:	RAD23A ( <a href="#">RAD23A Products</a> )
Background:	<p>Description: Multiubiquitin chain receptor involved in modulation of proteasomal degradation. Binds to 'Lys-48'-linked polyubiquitin chains in a length-dependent manner and with a lower affinity to 'Lys-63'-linked polyubiquitin chains. Proposed to be capable to bind simultaneously to the 26S proteasome and to polyubiquitinated substrates and to deliver ubiquitinated proteins to the proteasome.</p> <p>Gene: RAD23A</p>
Molecular Weight:	48 kDa
Gene ID:	5886
UniProt:	<a href="#">P54725</a>
Pathways:	<a href="#">DNA Damage Repair</a>

## Application Details

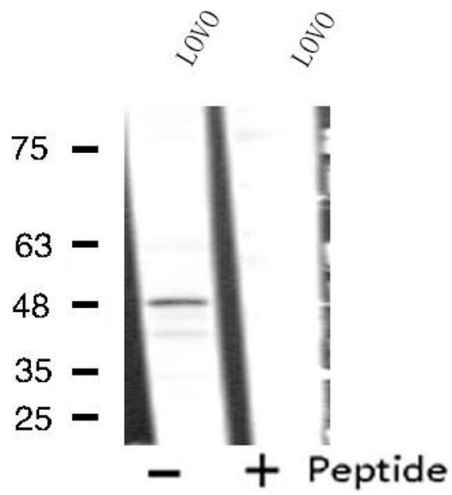
---

Application Notes:	WB 1:500-1:1000, ELISA(peptide) 1:20000-1:40000
Restrictions:	For Research Use only

## Handling

---

Format:	Liquid
Concentration:	1 mg/mL
Buffer:	Rabbit IgG in phosphate buffered saline , pH 7.4, 150 mM NaCl, 0.02 % sodium azide and 50 % glycerol.
Preservative:	Sodium azide
Precaution of Use:	This product contains Sodium azide: a POISONOUS AND HAZARDOUS SUBSTANCE which should be handled by trained staff only.
Storage:	-20 °C
Storage Comment:	Store at -20 °C. Stable for 12 months from date of receipt.
Expiry Date:	12 months



### Western Blotting

**Image 1.** Western blot analysis of extracts from LOVO cells, using RAD23A antibody.