



[Go to Product page](#)

Datasheet for ABIN6258895

anti-FASTKD1 antibody (Internal Region)

2 Images

Overview

Quantity:	100 µL
Target:	FASTKD1
Binding Specificity:	Internal Region
Reactivity:	Human, Mouse
Host:	Rabbit
Clonality:	Polyclonal
Conjugate:	This FASTKD1 antibody is un-conjugated
Application:	ELISA, Western Blotting (WB), Immunocytochemistry (ICC), Immunofluorescence (IF)

Product Details

Immunogen:	A synthesized peptide derived from human FAKD1, corresponding to a region within the internal amino acids.
Isotype:	IgG
Specificity:	FAKD1 Antibody detects endogenous levels of total FAKD1.
Predicted Reactivity:	Pig,Bovine,Horse,Rabbit,Dog
Purification:	The antiserum was purified by peptide affinity chromatography using SulfoLink™ Coupling Resin (Thermo Fisher Scientific).

Target Details

Target:	FASTKD1
---------	---------

Target Details

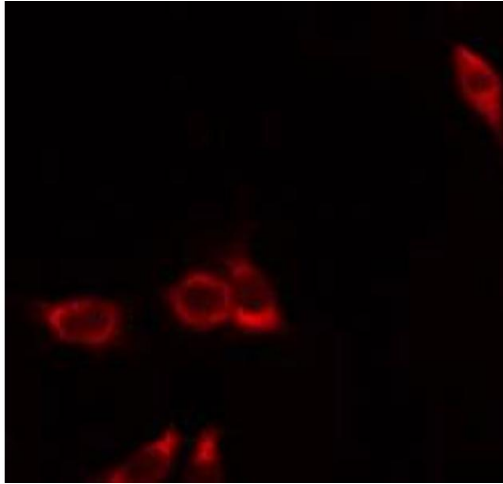
Alternative Name:	FASTKD1 (FASTKD1 Products)
Background:	Description: Regulates the stability of mitochondrial MT-ND3 mRNA (PubMed:28335001). Gene: FASTKD1
Molecular Weight:	97 kDa
Gene ID:	79675
UniProt:	Q53R41

Application Details

Application Notes:	WB 1:500-1:1000, IF/ICC 1:100-1:500, ELISA(peptide) 1:20000-1:40000
Restrictions:	For Research Use only

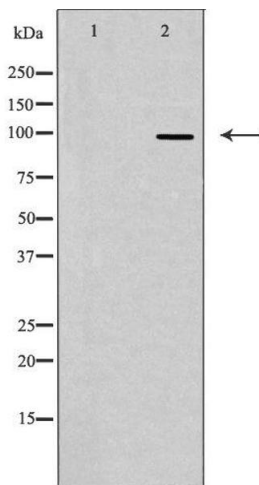
Handling

Format:	Liquid
Concentration:	1 mg/mL
Buffer:	Rabbit IgG in phosphate buffered saline , pH 7.4, 150 mM NaCl, 0.02 % sodium azide and 50 % glycerol.
Preservative:	Sodium azide
Precaution of Use:	This product contains Sodium azide: a POISONOUS AND HAZARDOUS SUBSTANCE which should be handled by trained staff only.
Storage:	-20 °C
Storage Comment:	Store at -20 °C. Stable for 12 months from date of receipt.
Expiry Date:	12 months



Immunofluorescence (fixed cells)

Image 1. ABIN6274392 staining HeLa by IF/ICC. The sample were fixed with PFA and permeabilized in 0.1% Triton X-100, then blocked in 10% serum for 45 minutes at 25°C. The primary antibody was diluted at 1/200 and incubated with the sample for 1 hour at 37°C. An Alexa Fluor 594 conjugated goat anti-rabbit IgG (H+L) Ab, diluted at 1/600, was used as the secondary antibody.



Western Blotting

Image 2. Western blot analysis of extracts from COS-7 cells, using FAKD1 antibody. The lane on the left is treated with the antigen-specific peptide.