

Datasheet for ABIN6258904
anti-GHITM antibody (N-Term)[Go to Product page](#)

1 Image

Overview

Quantity:	100 µL
Target:	GHITM
Binding Specificity:	N-Term
Reactivity:	Human
Host:	Rabbit
Clonality:	Polyclonal
Conjugate:	This GHITM antibody is un-conjugated
Application:	ELISA, Western Blotting (WB), Immunofluorescence (IF), Immunocytochemistry (ICC)

Product Details

Immunogen:	A synthesized peptide derived from human GHITM, corresponding to a region within N-terminal amino acids.
Isotype:	IgG
Specificity:	GHITM Antibody detects endogenous levels of total GHITM.
Predicted Reactivity:	Pig,Bovine,Horse,Sheep,Rabbit,Dog
Purification:	The antiserum was purified by peptide affinity chromatography using SulfoLink™ Coupling Resin (Thermo Fisher Scientific).

Target Details

Target:	GHITM
---------	-------

Target Details

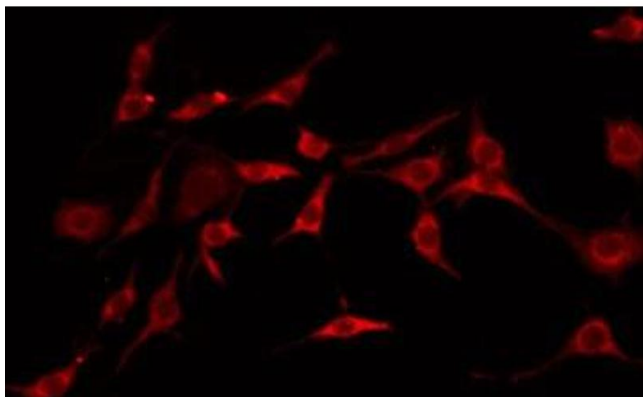
Alternative Name:	GHITM (GHITM Products)
Background:	Description: Required for the mitochondrial tubular network and cristae organization. Involved in apoptotic release of cytochrome c. Gene: GHITM
Molecular Weight:	37 kDa
Gene ID:	27069
UniProt:	Q9H3K2
Pathways:	SARS-CoV-2 Protein Interactome

Application Details

Application Notes:	WB 1:500-1:1000, IF/ICC 1:100-1:500, ELISA(peptide) 1:20000-1:40000
Restrictions:	For Research Use only

Handling

Format:	Liquid
Concentration:	1 mg/mL
Buffer:	Rabbit IgG in phosphate buffered saline , pH 7.4, 150 mM NaCl, 0.02 % sodium azide and 50 % glycerol.
Preservative:	Sodium azide
Precaution of Use:	This product contains Sodium azide: a POISONOUS AND HAZARDOUS SUBSTANCE which should be handled by trained staff only.
Storage:	-20 °C
Storage Comment:	Store at -20 °C. Stable for 12 months from date of receipt.
Expiry Date:	12 months



Immunofluorescence (fixed cells)

Image 1. ABIN6275161 staining LOVO by IF/ICC. The sample were fixed with PFA and permeabilized in 0.1% Triton X-100, then blocked in 10% serum for 45 minutes at 25°C. The primary antibody was diluted at 1/200 and incubated with the sample for 1 hour at 37°C. An Alexa Fluor 594 conjugated goat anti-rabbit IgG (H+L) Ab, diluted at 1/600, was used as the secondary antibody