

Datasheet for ABIN6258908

**anti-CD1e antibody**[Go to Product page](#)**1** Image

## Overview

Quantity:	100 µL
Target:	CD1e
Reactivity:	Human
Host:	Rabbit
Clonality:	Polyclonal
Conjugate:	This CD1e antibody is un-conjugated
Application:	Western Blotting (WB), ELISA, Immunofluorescence (IF), Immunocytochemistry (ICC)

## Product Details

Immunogen:	A synthesized peptide
Isotype:	IgG
Specificity:	CD1E Antibody detects endogenous levels of total CD1E
Cross-Reactivity:	Human
Purification:	The antiserum was purified by peptide affinity chromatography using SulfoLink™ Coupling Resin (Thermo Fisher Scientific).

## Target Details

Target:	CD1e
Alternative Name:	CD1E ( <a href="#">CD1e Products</a> )
Background:	Description: T-cell surface glycoprotein CD1e, soluble binds diacetylated lipids, including

## Target Details

phosphatidyl inositides and diacylated sulfoglycolipids, and is required for the presentation of glycolipid antigens on the cell surface. The membrane-associated form is not active.

Gene: CD1E

Molecular Weight: 36 kDa

Gene ID: 913

UniProt: [P15812](#)

## Application Details

Application Notes: WB 1:500~1:1000, IF/ICC 1:100-1:500

Restrictions: For Research Use only

## Handling

Format: Liquid

Concentration: 1 mg/mL

Buffer: Rabbit IgG in phosphate buffered saline , pH 7.4, 150 mM NaCl, 0.02 % sodium azide and 50 % glycerol.

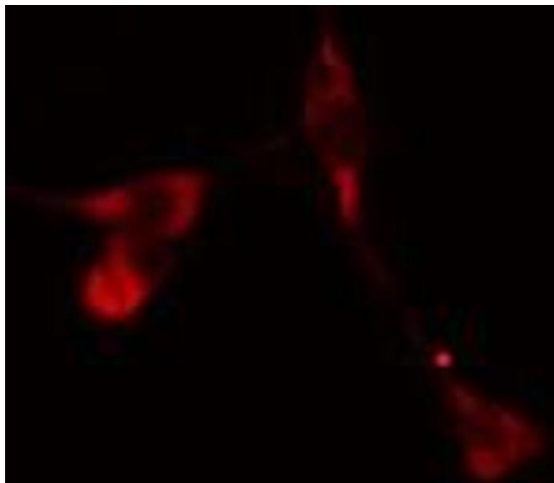
Preservative: Sodium azide

Precaution of Use: This product contains Sodium azide: a POISONOUS AND HAZARDOUS SUBSTANCE which should be handled by trained staff only.

Storage: -20 °C

Storage Comment: Store at -20 °C.Stable for 12 months from date of receipt

Expiry Date: 12 months



#### Immunofluorescence (fixed cells)

**Image 1.** ABIN6275622 staining HepG2 cells by IF/ICC. The sample were fixed with PFA and permeabilized in 0.1% Triton X-100, then blocked in 10% serum for 45 minutes at 25°C. The primary antibody was diluted at 1/200 and incubated with the sample for 1 hour at 37°C. An Alexa Fluor 594 conjugated goat anti-rabbit IgG (H+L) antibody (Cat.# S0006), diluted at 1/600, was used as secondary antibody.