



[Go to Product page](#)

Datasheet for ABIN6258914

## anti-INSL6 antibody (Internal Region)

### 2 Images

#### Overview

Quantity:	100 µL
Target:	INSL6
Binding Specificity:	Internal Region
Reactivity:	Human, Mouse
Host:	Rabbit
Clonality:	Polyclonal
Conjugate:	This INSL6 antibody is un-conjugated
Application:	ELISA, Western Blotting (WB), Immunohistochemistry (IHC)

#### Product Details

Immunogen:	A synthesized peptide derived from human INSL6, corresponding to a region within the internal amino acids.
Isotype:	IgG
Specificity:	INSL6 Antibody detects endogenous levels of total INSL6.
Purification:	The antiserum was purified by peptide affinity chromatography using SulfoLink™ Coupling Resin (Thermo Fisher Scientific).

#### Target Details

Target:	INSL6
Alternative Name:	INSL6 ( <a href="#">INSL6 Products</a> )

## Target Details

---

Background:	Description: May have a role in sperm development and fertilization. Gene: INSL6
Molecular Weight:	25 kDa
Gene ID:	11172
UniProt:	<a href="#">Q9Y581</a>
Pathways:	<a href="#">Hormone Activity</a>

## Application Details

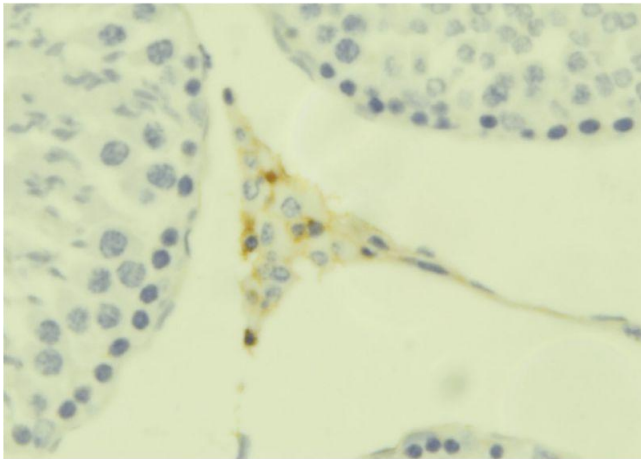
---

Application Notes:	WB 1:500-1:2000, IHC 1:50-1:200, ELISA(peptide) 1:20000-1:40000
Restrictions:	For Research Use only

## Handling

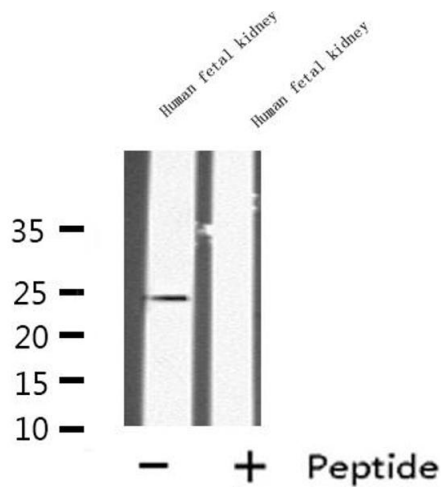
---

Format:	Liquid
Concentration:	1 mg/mL
Buffer:	Rabbit IgG in phosphate buffered saline, pH 7.4, 150 mM NaCl, 0.02 % sodium azide and 50 % glycerol.
Preservative:	Sodium azide
Precaution of Use:	This product contains Sodium azide: a POISONOUS AND HAZARDOUS SUBSTANCE which should be handled by trained staff only.
Storage:	-20 °C
Expiry Date:	12 months



### Immunohistochemistry

**Image 1.** ABIN6273666 at 1/100 staining Mouse testis tissue by IHC-P. The sample was formaldehyde fixed and a heat mediated antigen retrieval step in citrate buffer was performed. The sample was then blocked and incubated with the antibody for 1.5 hours at 22°C. An HRP conjugated goat anti-rabbit antibody was used as the secondary.



### Western Blotting

**Image 2.** Western blot analysis of INSL6 expression in Human fetal kidney lysate, The lane on the left is treated with the antigen-specific peptide.