



[Go to Product page](#)

Datasheet for ABIN6258915

## anti-Lipase I antibody (Internal Region)

### 2 Images

#### Overview

Quantity:	100 µL
Target:	Lipase I (LIPI)
Binding Specificity:	Internal Region
Reactivity:	Human
Host:	Rabbit
Clonality:	Polyclonal
Conjugate:	This Lipase I antibody is un-conjugated
Application:	Western Blotting (WB), ELISA, Immunocytochemistry (ICC), Immunofluorescence (IF)

#### Product Details

Immunogen:	A synthesized peptide derived from human LIPI, corresponding to a region within the internal amino acids.
Isotype:	IgG
Specificity:	LIPI Antibody detects endogenous levels of total LIPI.
Purification:	The antiserum was purified by peptide affinity chromatography using SulfoLink™ Coupling Resin (Thermo Fisher Scientific).

#### Target Details

Target:	Lipase I (LIPI)
Alternative Name:	LIPI ( <a href="#">LIPI Products</a> )

## Target Details

---

**Background:** Description: Hydrolyzes specifically phosphatidic acid (PA) to produce 2-acyl lysophosphatidic acid (LPA, a potent bioactive lipid mediator) and fatty acid. Does not hydrolyze other phospholipids, like phosphatidylserine (PS), phosphatidylcholine (PC) and phosphatidylethanolamine (PE) or triacylglycerol (TG).  
Gene: LIPI

**Molecular Weight:** 53 kDa

**Gene ID:** 149998

**UniProt:** [Q6XZB0](#)

## Application Details

---

**Application Notes:** WB 1:500-1:1000, IF/ICC 1:100-1:500, ELISA(peptide) 1:20000-1:40000

**Restrictions:** For Research Use only

## Handling

---

**Format:** Liquid

**Concentration:** 1 mg/mL

**Buffer:** Rabbit IgG in phosphate buffered saline , pH 7.4, 150 mM NaCl, 0.02 % sodium azide and 50 % glycerol.

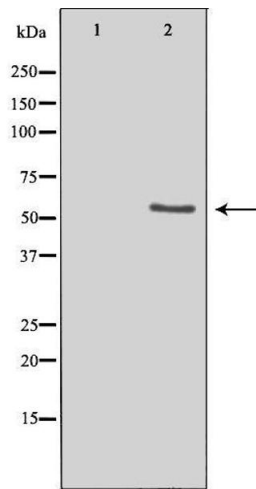
**Preservative:** Sodium azide

**Precaution of Use:** This product contains Sodium azide: a POISONOUS AND HAZARDOUS SUBSTANCE which should be handled by trained staff only.

**Storage:** -20 °C

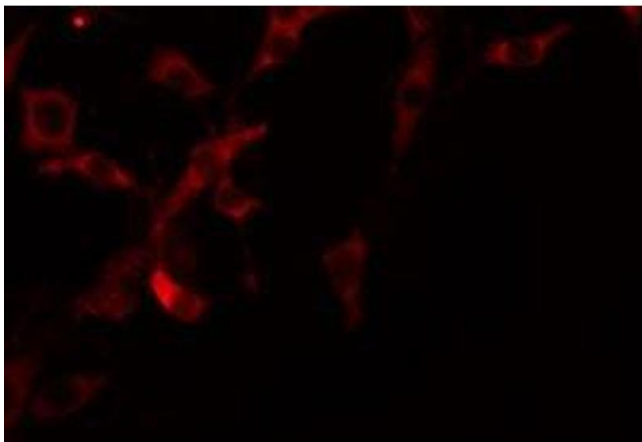
**Storage Comment:** Store at -20 °C. Stable for 12 months from date of receipt.

**Expiry Date:** 12 months



### Western Blotting

**Image 1.** Western blot analysis of extracts from COLO cells, using LIPI antibody. The lane on the left is treated with the antigen-specific peptide.



### Immunofluorescence (fixed cells)

**Image 2.** ABIN6275209 staining COLO205 by IF/ICC. The sample were fixed with PFA and permeabilized in 0.1% Triton X-100, then blocked in 10% serum for 45 minutes at 25°C. The primary antibody was diluted at 1/200 and incubated with the sample for 1 hour at 37°C. An Alexa Fluor 594 conjugated goat anti-rabbit IgG (H+L) Ab, diluted at 1/600, was used as the secondary antibody.