



Datasheet for ABIN6258924  
**anti-FOXN2 antibody (C-Term)**



[Go to Product page](#)

3 Images

Overview

|                      |  |
|----------------------|--|
| Quantity:            | 100 µL   |
| Target:              | FOXN2  |
| Binding Specificity: | C-Term   |
| Reactivity:          | Human, Mouse   |
| Host:                | Rabbit   |
| Clonality:           | Polyclonal   |
| Conjugate:           | This FOXN2 antibody is un-conjugated   |
| Application:         | Western Blotting (WB), ELISA, Immunofluorescence (IF), Immunocytochemistry (ICC) |

Product Details

|                       |   |
|-----------------------|---|
| Immunogen:            | A synthesized peptide derived from human FOXN2, corresponding to a region within C-terminal amino acids.                  |
| Isotype:              | IgG   |
| Specificity:          | FOXN2 Antibody detects endogenous levels of total FOXN2.  |
| Predicted Reactivity: | Pig,Rabbit,Dog  |
| Purification:         | The antiserum was purified by peptide affinity chromatography using SulfoLink™ Coupling Resin (Thermo Fisher Scientific). |

Target Details

|         |       |
|---------|-------|
| Target: | FOXN2 |
|---------|-------|

## Target Details

---

|                   |  |
|-------------------|--|
| Alternative Name: | FOXN2 ( <a href="#">FOXN2 Products</a> )                                   |
| Background:       | Description: Binds to the purine-rich region in HTLV-I LTR.<br>Gene: FOXN2 |
| Molecular Weight: | 36 kDa   |
| Gene ID:          | 3344   |
| UniProt:          | <a href="#">P32314</a>   |

## Application Details

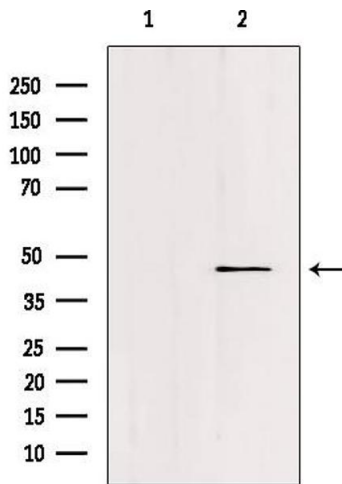
---

|                    |   |
|--------------------|---|
| Application Notes: | WB 1:500-1:1000, IF/ICC 1:100-1:500, ELISA(peptide) 1:20000-1:40000 |
| Restrictions:      | For Research Use only   |

## Handling

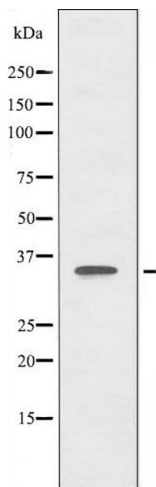
---

|                    |  |
|--------------------|--|
| Format:            | Liquid   |
| Concentration:     | 1 mg/mL  |
| Buffer:            | Rabbit IgG in phosphate buffered saline , pH 7.4, 150 mM NaCl, 0.02 % sodium azide and 50 % glycerol.                  |
| Preservative:      | Sodium azide   |
| Precaution of Use: | This product contains Sodium azide: a POISONOUS AND HAZARDOUS SUBSTANCE which should be handled by trained staff only. |
| Storage:           | -20 °C   |
| Storage Comment:   | Store at -20 °C. Stable for 12 months from date of receipt.  |
| Expiry Date:       | 12 months  |



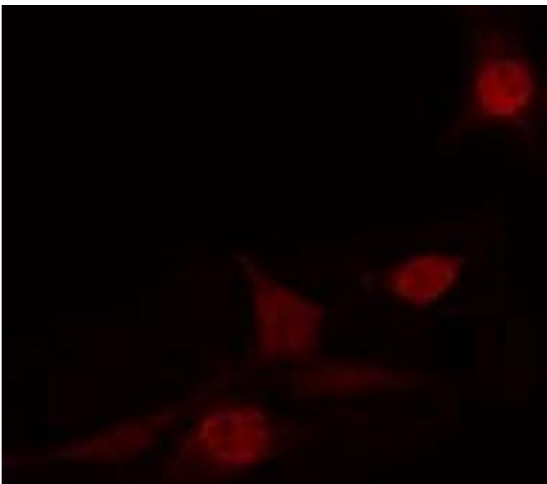
### Western Blotting

**Image 1.** Western blot analysis of extracts from c476, using FOXN2 Antibody. Lane 1 was treated with the blocking peptide.



### Western Blotting

**Image 2.** Western blot analysis of extracts from HT-2 cells using FOXN2 antibody.



### Immunofluorescence (fixed cells)

**Image 3.** ABIN6274231 staining HT29 cells by IF/ICC. The sample were fixed with PFA and permeabilized in 0.1% Triton X-100, then blocked in 10% serum for 45 minutes at 25°C. The primary antibody was diluted at 1/200 and incubated with the sample for 1 hour at 37°C. An Alexa Fluor 594 conjugated goat anti-rabbit IgG (H+L) antibody (Cat.# S0006), diluted at 1/600, was used as secondary antibody.