



[Go to Product page](#)

Datasheet for ABIN6258929

anti-GPR180 antibody (Internal Region)

3 Images

Overview

| | |
|----------------------|--|
| Quantity: | 100 µL |
| Target: | GPR180 |
| Binding Specificity: | Internal Region |
| Reactivity: | Human, Mouse |
| Host: | Rabbit |
| Clonality: | Polyclonal |
| Conjugate: | This GPR180 antibody is un-conjugated |
| Application: | ELISA, Western Blotting (WB), Immunohistochemistry (IHC), Immunofluorescence (IF), Immunocytochemistry (ICC) |

Product Details

| | |
|-----------------------|---|
| Immunogen: | A synthesized peptide derived from human GPR180, corresponding to a region within the internal amino acids. |
| Isotype: | IgG |
| Specificity: | GPR180 Antibody detects endogenous levels of total GPR180. |
| Predicted Reactivity: | Pig,Bovine,Horse,Sheep,Rabbit,Dog,Chicken |
| Purification: | The antiserum was purified by peptide affinity chromatography using SulfoLink™ Coupling Resin (Thermo Fisher Scientific). |

Target Details

| | |
|---------|--------|
| Target: | GPR180 |
|---------|--------|

Target Details

Alternative Name: GPR180 ([GPR180 Products](#))

Background: Gene: GPR180

Molecular Weight: 50 kDa

Gene ID: 160897

UniProt: [Q86V85](#)

Application Details

Application Notes: WB 1:500-1:1000, IHC: 1:50-1:200, IF/ICC 1:100-1:500, ELISA(peptide) 1:20000-1:40000

Restrictions: For Research Use only

Handling

Format: Liquid

Concentration: 1 mg/mL

Buffer: Rabbit IgG in phosphate buffered saline , pH 7.4, 150 mM NaCl, 0.02 % sodium azide and 50 % glycerol.

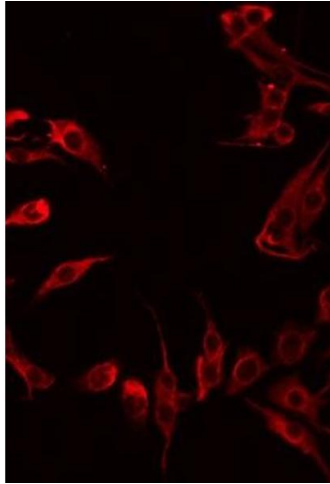
Preservative: Sodium azide

Precaution of Use: This product contains Sodium azide: a POISONOUS AND HAZARDOUS SUBSTANCE which should be handled by trained staff only.

Storage: -20 °C

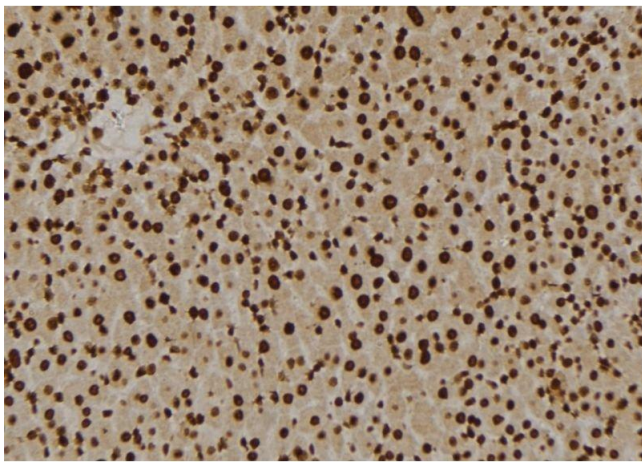
Storage Comment: Store at -20 °C. Stable for 12 months from date of receipt.

Expiry Date: 12 months



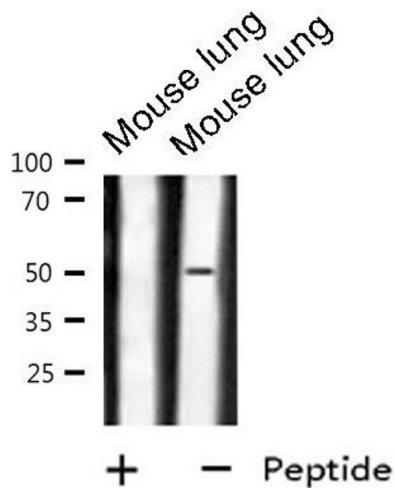
Immunofluorescence (fixed cells)

Image 1. ABIN6276023 staining LOVO by IF/ICC. The sample were fixed with PFA and permeabilized in 0.1% Triton X-100, then blocked in 10% serum for 45 minutes at 25°C. The primary antibody was diluted at 1/200 and incubated with the sample for 1 hour at 37°C. An Alexa Fluor 594 conjugated goat anti-rabbit IgG (H+L) Ab, diluted at 1/600, was used as the secondary antibody



Immunohistochemistry

Image 2. ABIN6276023 at 1/100 staining Mouse liver tissue by IHC-P. The sample was formaldehyde fixed and a heat mediated antigen retrieval step in citrate buffer was performed. The sample was then blocked and incubated with the antibody for 1.5 hours at 22°C. An HRP conjugated goat anti-rabbit antibody was used as the secondary



Western Blotting

Image 3. Western blot analysis of GPR180 expression in Mouse lung lysate