

Datasheet for ABIN6258941
anti-CCDC102B antibody (Internal Region)[Go to Product page](#)

3 Images

Overview

| | |
|----------------------|--|
| Quantity: | 100 µL |
| Target: | CCDC102B |
| Binding Specificity: | Internal Region |
| Reactivity: | Human |
| Host: | Rabbit |
| Clonality: | Polyclonal |
| Conjugate: | This CCDC102B antibody is un-conjugated |
| Application: | Western Blotting (WB), Immunohistochemistry (IHC), ELISA, Immunocytochemistry (ICC), Immunofluorescence (IF) |

Product Details

| | |
|-----------------------|---|
| Immunogen: | A synthesized peptide derived from human CCDC102B, corresponding to a region within the internal amino acids. |
| Isotype: | IgG |
| Specificity: | CCDC102B Antibody detects endogenous levels of total CCDC102B. |
| Predicted Reactivity: | Bovine,Horse,Sheep,Dog,Chicken |
| Purification: | The antiserum was purified by peptide affinity chromatography using SulfoLink™ Coupling Resin (Thermo Fisher Scientific). |

Target Details

| | |
|---------|----------|
| Target: | CCDC102B |
|---------|----------|

Target Details

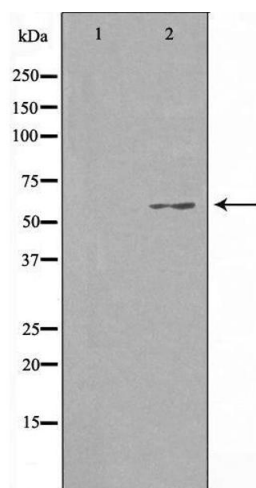
| | |
|-------------------|--|
| Alternative Name: | CCDC102B (CCDC102B Products) |
| Background: | Gene: CCDC102B |
| Molecular Weight: | 60 kDa |
| Gene ID: | 79839 |
| UniProt: | Q68D86 |

Application Details

| | |
|--------------------|--|
| Application Notes: | WB 1:500-1:1000, IHC: 1:50-1:200, IF/ICC 1:100-1:500, ELISA(peptide) 1:20000-1:40000 |
| Restrictions: | For Research Use only |

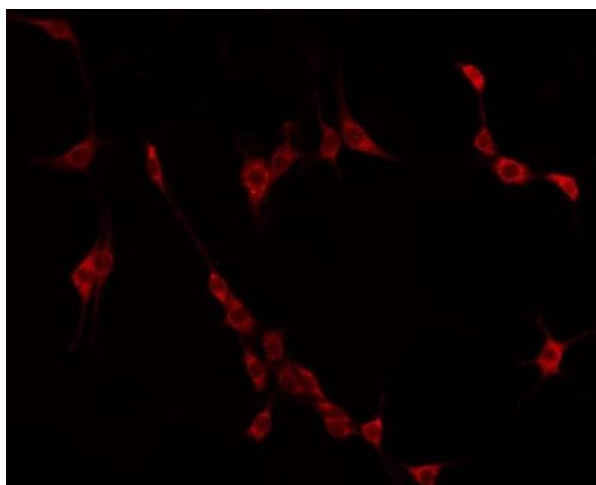
Handling

| | |
|--------------------|--|
| Format: | Liquid |
| Concentration: | 1 mg/mL |
| Buffer: | Rabbit IgG in phosphate buffered saline , pH 7.4, 150 mM NaCl, 0.02 % sodium azide and 50 % glycerol. |
| Preservative: | Sodium azide |
| Precaution of Use: | This product contains Sodium azide: a POISONOUS AND HAZARDOUS SUBSTANCE which should be handled by trained staff only. |
| Storage: | -20 °C |
| Storage Comment: | Store at -20 °C. Stable for 12 months from date of receipt. |
| Expiry Date: | 12 months |



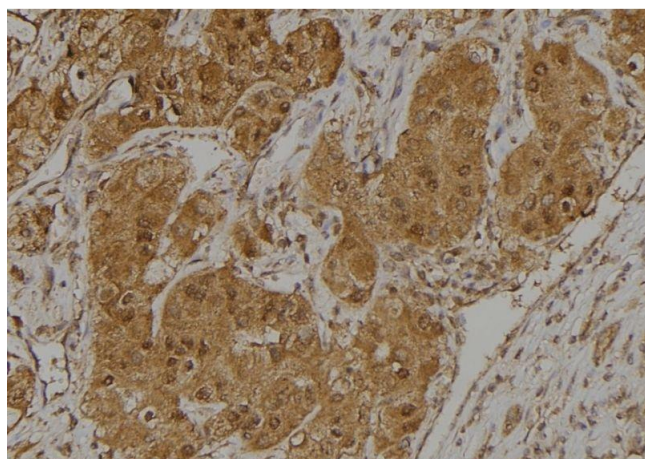
Western Blotting

Image 1. Western blot analysis of extracts from HuvEc cells using CCDC102B antibody. The lane on the left is treated with the antigen-specific peptide.



Immunofluorescence (fixed cells)

Image 2. ABIN6275025 staining HuvEc by IF/ICC. The sample were fixed with PFA and permeabilized in 0.1% Triton X-100, then blocked in 10% serum for 45 minutes at 25°C. The primary antibody was diluted at 1/200 and incubated with the sample for 1 hour at 37°C. An Alexa Fluor 594 conjugated goat anti-rabbit IgG (H+L) Ab, diluted at 1/600, was used as the secondary antibody.



Immunohistochemistry

Image 3. ABIN6275025 at 1/100 staining Human kidney tissue by IHC-P. The sample was formaldehyde fixed and a heat mediated antigen retrieval step in citrate buffer was performed. The sample was then blocked and incubated with the antibody for 1.5 hours at 22°C. An HRP conjugated goat anti-rabbit antibody was used as the secondary.