

Datasheet for ABIN6258942

**anti-GPR114 antibody (Internal Region)**[Go to Product page](#)**2** Images

## Overview

Quantity:	100 µL
Target:	GPR114
Binding Specificity:	Internal Region
Reactivity:	Human
Host:	Rabbit
Clonality:	Polyclonal
Conjugate:	This GPR114 antibody is un-conjugated
Application:	Western Blotting (WB), ELISA, Immunofluorescence (IF), Immunocytochemistry (ICC)

## Product Details

Immunogen:	A synthesized peptide derived from human GPR114, corresponding to a region within the internal amino acids.
Isotype:	IgG
Specificity:	GPR114 Antibody detects endogenous levels of total GPR114.
Purification:	The antiserum was purified by peptide affinity chromatography using SulfoLink™ Coupling Resin (Thermo Fisher Scientific).

## Target Details

Target:	GPR114
Alternative Name:	ADGRG5 ( <a href="#">GPR114 Products</a> )

## Target Details

Background:	Description: Adhesion G protein-coupled receptor (GPCR). Transduces intracellular signals through coupling to guanine nucleotide-binding protein G(s) subunit alpha and activation of adenylyl cyclase pathway. Isoform 1, but not isoform 2, is constitutively active, as evidenced by elevated basal cAMP levels, and responds to mechanical activation (shaking). Gene: ADGRG5
-------------	--

Molecular Weight:	59 kDa
-------------------	--------

Gene ID:	221188
----------	--------

UniProt:	<a href="#">Q8IZF4</a>
----------	------------------------

## Application Details

Application Notes:	WB 1:500-1:1000, IF/ICC 1:100-1:500, ELISA(peptide) 1:20000-1:40000
--------------------	---

Restrictions:	For Research Use only
---------------	-----------------------

## Handling

Format:	Liquid
---------	--------

Concentration:	1 mg/mL
----------------	---------

Buffer:	Rabbit IgG in phosphate buffered saline , pH 7.4, 150 mM NaCl, 0.02 % sodium azide and 50 % glycerol.
---------	---

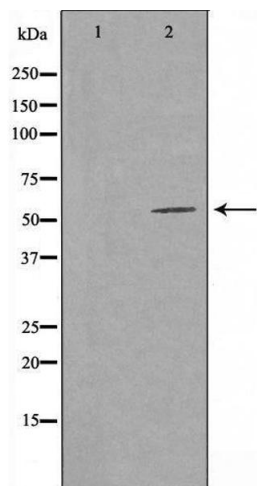
Preservative:	Sodium azide
---------------	--------------

Precaution of Use:	This product contains Sodium azide: a POISONOUS AND HAZARDOUS SUBSTANCE which should be handled by trained staff only.
--------------------	--

Storage:	-20 °C
----------	--------

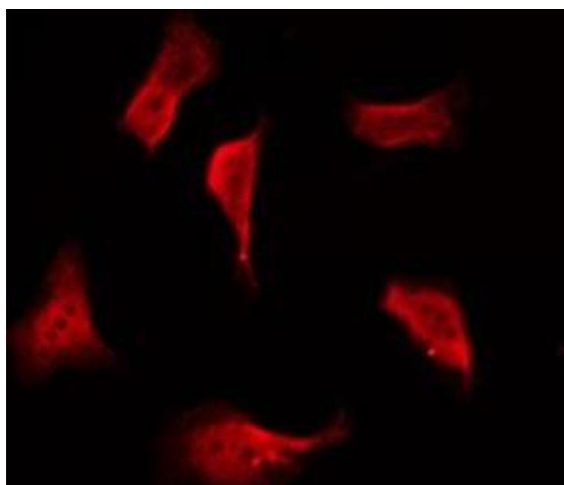
Storage Comment:	Store at -20 °C. Stable for 12 months from date of receipt.
------------------	---

Expiry Date:	12 months
--------------	-----------



### Western Blotting

**Image 1.** Western blot analysis of extracts from COLO cells, using GPR114 antibody. The lane on the left is treated with the antigen-specific peptide.



### Immunofluorescence (fixed cells)

**Image 2.** ABIN6276004 staining COLO205 by IF/ICC. The sample were fixed with PFA and permeabilized in 0.1% Triton X-100, then blocked in 10% serum for 45 minutes at 25°C. The primary antibody was diluted at 1/200 and incubated with the sample for 1 hour at 37°C. An Alexa Fluor 594 conjugated goat anti-rabbit IgG (H+L) Ab, diluted at 1/600, was used as the secondary antibody.