

Datasheet for ABIN6258943

**anti-MINPP1 antibody (Internal Region)****2** Images[Go to Product page](#)

## Overview

|                      |  |
|----------------------|--|
| Quantity:            | 100 µL   |
| Target:              | MINPP1   |
| Binding Specificity: | Internal Region  |
| Reactivity:          | Human, Rat, Mouse  |
| Host:                | Rabbit   |
| Clonality:           | Polyclonal   |
| Application:         | ELISA, Western Blotting (WB), Immunofluorescence (IF), Immunocytochemistry (ICC) |

## Product Details

|                       |   |
|-----------------------|---|
| Immunogen:            | A synthesized peptide derived from human MINPP1, corresponding to a region within the internal amino acids.               |
| Isotype:              | IgG   |
| Specificity:          | MINPP1 Antibody detects endogenous levels of total MINPP1.  |
| Predicted Reactivity: | Pig,Bovine,Horse,Sheep,Rabbit,Dog   |
| Purification:         | The antiserum was purified by peptide affinity chromatography using SulfoLink™ Coupling Resin (Thermo Fisher Scientific). |

## Target Details

|                   |  |
|-------------------|--|
| Target:           | MINPP1                                     |
| Alternative Name: | MINPP1 ( <a href="#">MINPP1 Products</a> ) |

## Target Details

|             |   |
|-------------|---|
| Background: | <p>Description: Acts as a phosphoinositide 5- and phosphoinositide 6-phosphatase and regulates cellular levels of inositol pentakisphosphate (InsP5) and inositol hexakisphosphate (InsP6). Also acts as a 2,3-bisphosphoglycerate 3-phosphatase, by mediating the dephosphorylation of 2,3-bisphosphoglycerate (2,3-BPG) to produce phospho-D-glycerate without formation of 3-phosphoglycerate. May play a role in bone development (endochondral ossification). May play a role in the transition of chondrocytes from proliferation to hypertrophy (By similarity).</p> <p>Gene: MINPP1</p> |
|-------------|---|

|                   |        |
|-------------------|--------|
| Molecular Weight: | 60 kDa |
|-------------------|--------|

|          |      |
|----------|------|
| Gene ID: | 9562 |
|----------|------|

|          |                        |
|----------|------------------------|
| UniProt: | <a href="#">Q9UNW1</a> |
|----------|------------------------|

## Application Details

|                    |   |
|--------------------|---|
| Application Notes: | WB 1:500-1:1000, IF/ICC 1:100-1:500, ELISA(peptide) 1:20000-1:40000 |
|--------------------|---|

|               |                       |
|---------------|-----------------------|
| Restrictions: | For Research Use only |
|---------------|-----------------------|

## Handling

|         |        |
|---------|--------|
| Format: | Liquid |
|---------|--------|

|                |         |
|----------------|---------|
| Concentration: | 1 mg/mL |
|----------------|---------|

|         |   |
|---------|---|
| Buffer: | Rabbit IgG in phosphate buffered saline , pH 7.4, 150 mM NaCl, 0.02 % sodium azide and 50 % glycerol. |
|---------|---|

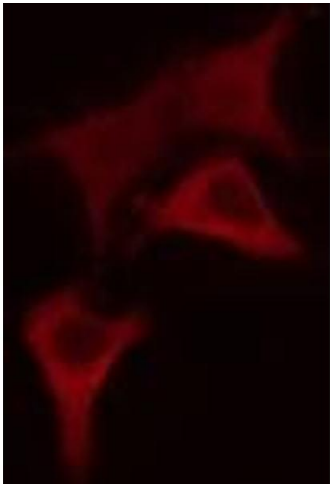
|               |              |
|---------------|--------------|
| Preservative: | Sodium azide |
|---------------|--------------|

|                    |  |
|--------------------|--|
| Precaution of Use: | This product contains Sodium azide: a POISONOUS AND HAZARDOUS SUBSTANCE which should be handled by trained staff only. |
|--------------------|--|

|          |        |
|----------|--------|
| Storage: | -20 °C |
|----------|--------|

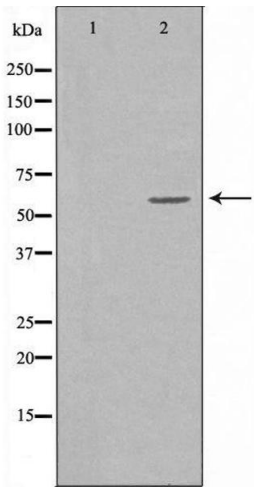
|                  |   |
|------------------|---|
| Storage Comment: | Store at -20 °C. Stable for 12 months from date of receipt. |
|------------------|---|

|              |           |
|--------------|-----------|
| Expiry Date: | 12 months |
|--------------|-----------|



**Immunofluorescence (fixed cells)**

**Image 1.** ABIN6275257 staining 293 cells by IF/ICC. The sample were fixed with PFA and permeabilized in 0.1% Triton X-100,then blocked in 10% serum for 45 minutes at 25°C. The primary antibody was diluted at 1/200 and incubated with the sample for 1 hour at 37°C. An Alexa Fluor 594 conjugated goat anti-rabbit IgG (H+L) antibody(Cat.# S0006), diluted at 1/600, was used as secondary antibody



**Western Blotting**

**Image 2.** Western blot analysis of extracts from 293 cells, using MINPP1 antibody.,The lane on the left is treated with the antigen-specific peptide.