



[Go to Product page](#)

Datasheet for ABIN6258957

anti-HEXIM2 antibody (Internal Region)

1 Image

Overview

Quantity:	100 µL
Target:	HEXIM2
Binding Specificity:	Internal Region
Reactivity:	Human, Mouse
Host:	Rabbit
Clonality:	Polyclonal
Conjugate:	This HEXIM2 antibody is un-conjugated
Application:	Western Blotting (WB), ELISA, Immunocytochemistry (ICC), Immunofluorescence (IF)

Product Details

Immunogen:	A synthesized peptide derived from human HEXIM2, corresponding to a region within the internal amino acids.
Isotype:	IgG
Specificity:	HEXIM2 Antibody detects endogenous levels of total HEXIM2.
Predicted Reactivity:	Pig,Horse,Sheep,Rabbit,Dog
Purification:	The antiserum was purified by peptide affinity chromatography using SulfoLink™ Coupling Resin (Thermo Fisher Scientific).

Target Details

Target:	HEXIM2
---------	--------

Target Details

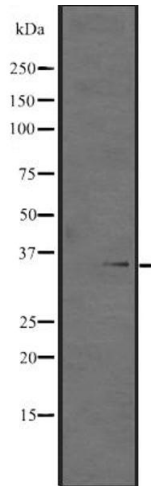
Alternative Name:	HEXIM2 (HEXIM2 Products)
Background:	Description: Transcriptional regulator which functions as a general RNA polymerase II transcription inhibitor. In cooperation with 7SK snRNA sequesters P-TEFb in a large inactive 7SK snRNP complex preventing RNA polymerase II phosphorylation and subsequent transcriptional elongation. Gene: HEXIM2
Molecular Weight:	32 kDa
Gene ID:	124790
UniProt:	Q96MH2

Application Details

Application Notes:	WB 1:500-1:2000, IF/ICC 1:100-1:500, ELISA(peptide) 1:20000-1:40000
Restrictions:	For Research Use only

Handling

Format:	Liquid
Concentration:	1 mg/mL
Buffer:	Rabbit IgG in phosphate buffered saline, pH 7.4, 150 mM NaCl, 0.02 % sodium azide and 50 % glycerol.
Preservative:	Sodium azide
Precaution of Use:	This product contains Sodium azide: a POISONOUS AND HAZARDOUS SUBSTANCE which should be handled by trained staff only.
Storage:	-20 °C
Expiry Date:	12 months



Western Blotting

Image 1. Western blot analysis of HEXIM2 expression in ; HepG2 cell lysate, The lane on the left is treated with the antigen-specific peptide.