

Datasheet for ABIN6258959

anti-FOXB1/2 antibody**2** Images[Go to Product page](#)

Overview

| | |
|--------------|--|
| Quantity: | 100 µL |
| Target: | FOXB1/2 |
| Reactivity: | Human, Mouse |
| Host: | Rabbit |
| Clonality: | Polyclonal |
| Conjugate: | This FOXB1/2 antibody is un-conjugated |
| Application: | Western Blotting (WB), ELISA, Immunocytochemistry (ICC), Immunofluorescence (IF) |

Product Details

| | |
|-------------------|---|
| Immunogen: | A synthesized peptide |
| Isotype: | IgG |
| Specificity: | FOXB1/2 Antibody detects endogenous levels of total FOXB1/2 |
| Cross-Reactivity: | Human, Mouse (Murine) |
| Purification: | The antiserum was purified by peptide affinity chromatography using SulfoLink™ Coupling Resin (Thermo Fisher Scientific). |

Target Details

| | |
|-------------------|--|
| Target: | FOXB1/2 |
| Alternative Name: | FOXB1/2 (FOXB1/2 Products) |
| Background: | Gene: FOXB1 |

Target Details

| | |
|-------------------|---|
| Molecular Weight: | 45 kDa |
| Gene ID: | 27023 |
| UniProt: | Q99853 , Q5VYV0 |

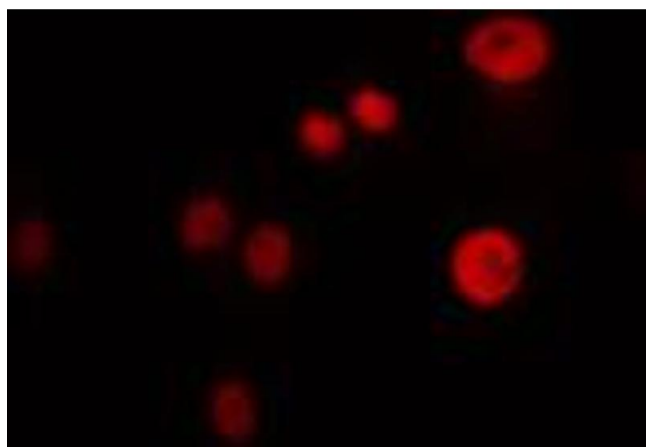
Application Details

| | |
|--------------------|-------------------------------------|
| Application Notes: | WB 1:500~1:1000, IF/ICC 1:100-1:500 |
| Restrictions: | For Research Use only |

Handling

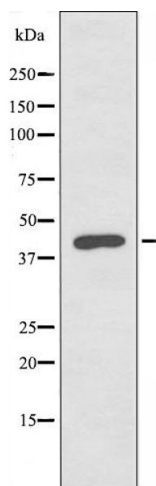
| | |
|--------------------|--|
| Format: | Liquid |
| Concentration: | 1 mg/mL |
| Buffer: | Rabbit IgG in phosphate buffered saline , pH 7.4, 150 mM NaCl, 0.02 % sodium azide and 50 % glycerol. |
| Preservative: | Sodium azide |
| Precaution of Use: | This product contains Sodium azide: a POISONOUS AND HAZARDOUS SUBSTANCE which should be handled by trained staff only. |
| Storage: | -20 °C |
| Storage Comment: | Store at -20 °C.Stable for 12 months from date of receipt |
| Expiry Date: | 12 months |

Images



Immunofluorescence (fixed cells)

Image 1. ABIN6274487 staining 293 cells by IF/ICC. The sample were fixed with PFA and permeabilized in 0.1% Triton X-100, then blocked in 10% serum for 45 minutes at 25°C. The primary antibody was diluted at 1/200 and incubated with the sample for 1 hour at 37°C. An Alexa Fluor 594 conjugated goat anti-rabbit IgG (H+L) antibody (Cat.# S0006), diluted at 1/600, was used as secondary antibody.



Western Blotting

Image 2. Western blot analysis of extracts from 293 cells, using FOXB1/2 antibody.