

Datasheet for ABIN6258962
anti-PLA2G4C antibody (Internal Region)



[Go to Product page](#)

2 Images

Overview

Quantity:	100 µL
Target:	PLA2G4C
Binding Specificity:	Internal Region
Reactivity:	Human
Host:	Rabbit
Clonality:	Polyclonal
Conjugate:	This PLA2G4C antibody is un-conjugated
Application:	Western Blotting (WB), ELISA, Immunofluorescence (IF), Immunocytochemistry (ICC)

Product Details

Immunogen:	A synthesized peptide derived from human PLA2G4C, corresponding to a region within the internal amino acids.
Isotype:	IgG
Specificity:	PLA2G4C Antibody detects endogenous levels of total PLA2G4C.
Purification:	The antiserum was purified by peptide affinity chromatography using SulfoLink™ Coupling Resin (Thermo Fisher Scientific).

Target Details

Target:	PLA2G4C
Alternative Name:	PLA2G4C (PLA2G4C Products)

Target Details

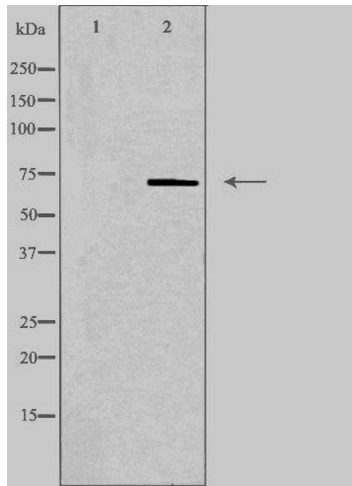
Background:	Description: Has a preference for arachidonic acid at the sn-2 position of phosphatidylcholine as compared with palmitic acid. Gene: PLA2G4C
Molecular Weight:	70 kDa
Gene ID:	8605
UniProt:	Q9UP65
Pathways:	Inositol Metabolic Process , VEGF Signaling

Application Details

Application Notes:	WB 1:500-1:1000, IF/ICC 1:100-1:500, ELISA(peptide) 1:20000-1:40000
Restrictions:	For Research Use only

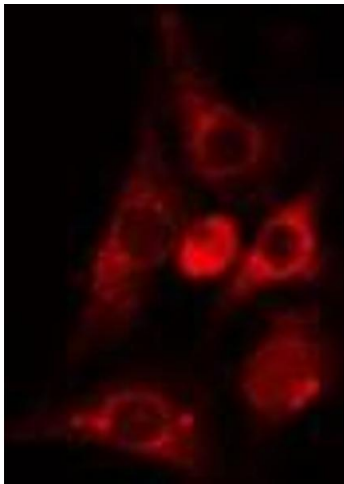
Handling

Format:	Liquid
Concentration:	1 mg/mL
Buffer:	Rabbit IgG in phosphate buffered saline , pH 7.4, 150 mM NaCl, 0.02 % sodium azide and 50 % glycerol.
Preservative:	Sodium azide
Precaution of Use:	This product contains Sodium azide: a POISONOUS AND HAZARDOUS SUBSTANCE which should be handled by trained staff only.
Storage:	-20 °C
Storage Comment:	Store at -20 °C. Stable for 12 months from date of receipt.
Expiry Date:	12 months



Western Blotting

Image 1. Western blot analysis of extracts from Jurkat cells, using PLA2G4C antibody. The lane on the left is treated with the antigen-specific peptide.



Immunofluorescence (fixed cells)

Image 2. ABIN6275051 staining HeLa cells by IF/ICC. The sample were fixed with PFA and permeabilized in 0.1% Triton X-100, then blocked in 10% serum for 45 minutes at 25°C. The primary antibody was diluted at 1/200 and incubated with the sample for 1 hour at 37°C. An Alexa Fluor 594 conjugated goat anti-rabbit IgG (H+L) antibody (Cat.# S0006), diluted at 1/600, was used as secondary antibody