

Datasheet for ABIN6258965  
**anti-GABRg1 antibody (N-Term)**[Go to Product page](#)

## 2 Images

## Overview

|                      |  |
|----------------------|--|
| Quantity:            | 100 µL   |
| Target:              | GABRg1   |
| Binding Specificity: | N-Term   |
| Reactivity:          | Human, Rat, Mouse  |
| Host:                | Rabbit   |
| Clonality:           | Polyclonal   |
| Conjugate:           | This GABRg1 antibody is un-conjugated  |
| Application:         | Western Blotting (WB), ELISA, Immunofluorescence (IF), Immunocytochemistry (ICC) |

## Product Details

|                       |   |
|-----------------------|---|
| Immunogen:            | A synthesized peptide derived from human GABRG1, corresponding to a region within N-terminal amino acids.                 |
| Isotype:              | IgG   |
| Specificity:          | GABRG1 Antibody detects endogenous levels of total GABRG1.  |
| Predicted Reactivity: | Pig,Bovine,Horse,Sheep,Rabbit,Dog,Chicken   |
| Purification:         | The antiserum was purified by peptide affinity chromatography using SulfoLink™ Coupling Resin (Thermo Fisher Scientific). |

## Target Details

|         |        |
|---------|--------|
| Target: | GABRg1 |
|---------|--------|

## Target Details

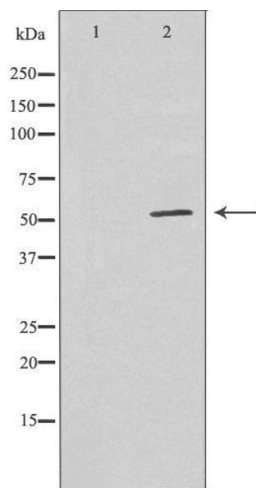
|                   |   |
|-------------------|---|
| Alternative Name: | GABRG1 ( <a href="#">GABRg1 Products</a> )  |
| Background:       | Description: GABA, the major inhibitory neurotransmitter in the vertebrate brain, mediates neuronal inhibition by binding to the GABA/benzodiazepine receptor and opening an integral chloride channel.<br>Gene: GABRG1 |
| Molecular Weight: | 54 kDa  |
| Gene ID:          | 2565  |
| UniProt:          | <a href="#">Q8N1C3</a>  |
| Pathways:         | <a href="#">Synaptic Membrane</a>   |

## Application Details

|                    |   |
|--------------------|---|
| Application Notes: | WB 1:500-1:1000, IF/ICC 1:100-1:500, ELISA(peptide) 1:20000-1:40000 |
| Restrictions:      | For Research Use only   |

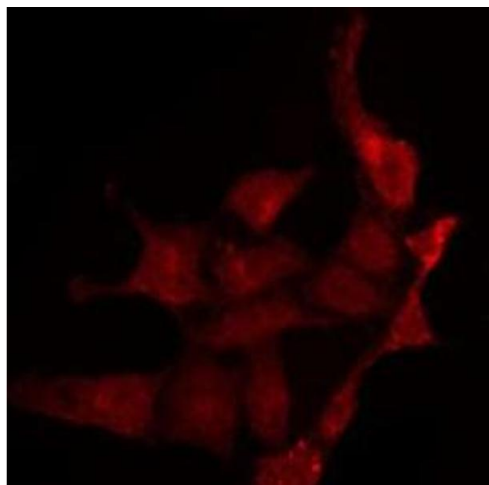
## Handling

|                    |  |
|--------------------|--|
| Format:            | Liquid   |
| Concentration:     | 1 mg/mL  |
| Buffer:            | Rabbit IgG in phosphate buffered saline , pH 7.4, 150 mM NaCl, 0.02 % sodium azide and 50 % glycerol.                  |
| Preservative:      | Sodium azide   |
| Precaution of Use: | This product contains Sodium azide: a POISONOUS AND HAZARDOUS SUBSTANCE which should be handled by trained staff only. |
| Storage:           | -20 °C   |
| Storage Comment:   | Store at -20 °C. Stable for 12 months from date of receipt.  |
| Expiry Date:       | 12 months  |



### Western Blotting

**Image 1.** Western blot analysis of extracts from RAW264.7 cells using GABRG1 antibody.



### Immunofluorescence (fixed cells)

**Image 2.** ABIN6275140 staining LOVO by IF/ICC. The sample were fixed with PFA and permeabilized in 0.1% Triton X-100, then blocked in 10% serum for 45 minutes at 25°C. The primary antibody was diluted at 1/200 and incubated with the sample for 1 hour at 37°C. An Alexa Fluor 594 conjugated goat anti-rabbit IgG (H+L) Ab, diluted at 1/600, was used as the secondary antibody.