

Datasheet for ABIN6258987
anti-PSGR antibody (Internal Region)[Go to Product page](#)

1 Image

Overview

| | |
|----------------------|--|
| Quantity: | 100 µL |
| Target: | PSGR (OR51E2) |
| Binding Specificity: | Internal Region |
| Reactivity: | Human, Rat |
| Host: | Rabbit |
| Clonality: | Polyclonal |
| Conjugate: | This PSGR antibody is un-conjugated |
| Application: | Western Blotting (WB), ELISA, Immunofluorescence (IF), Immunocytochemistry (ICC) |

Product Details

| | |
|-----------------------|---|
| Immunogen: | A synthesized peptide derived from human OR51E2, corresponding to a region within the internal amino acids. |
| Isotype: | IgG |
| Specificity: | OR51E2 Antibody detects endogenous levels of total OR51E2. |
| Predicted Reactivity: | Pig,Bovine,Horse,Sheep,Rabbit,Dog |
| Purification: | The antiserum was purified by peptide affinity chromatography using SulfoLink™ Coupling Resin (Thermo Fisher Scientific). |

Target Details

| | |
|---------|---------------|
| Target: | PSGR (OR51E2) |
|---------|---------------|

Target Details

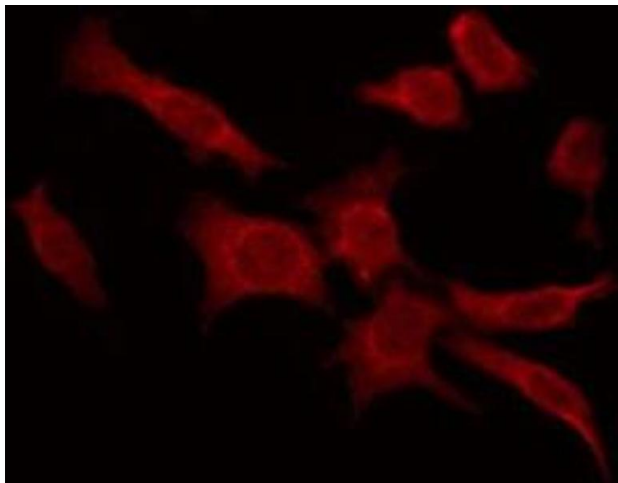
| | |
|-------------------|---|
| Alternative Name: | OR51E2 (OR51E2 Products) |
| Background: | <p>Description: Probable G protein-coupled receptor that is activated by the short chain fatty acids (SCFA) acetate and propionate. In response to SCFA, may positively regulate renin secretion and increase blood pressure (PubMed:23401498). May also be activated by steroid hormones and regulate cell proliferation (PubMed:19389702). May also function as an olfactory receptor being activated by beta-ionone (PubMed:19389702).</p> <p>Gene: OR51E2</p> |
| Molecular Weight: | 35 kDa |
| Gene ID: | 81285 |
| UniProt: | Q9H255 |

Application Details

| | |
|--------------------|---|
| Application Notes: | WB 1:500-1:1000, IF/ICC 1:100-1:500, ELISA(peptide) 1:20000-1:40000 |
| Restrictions: | For Research Use only |

Handling

| | |
|--------------------|--|
| Format: | Liquid |
| Concentration: | 1 mg/mL |
| Buffer: | Rabbit IgG in phosphate buffered saline , pH 7.4, 150 mM NaCl, 0.02 % sodium azide and 50 % glycerol. |
| Preservative: | Sodium azide |
| Precaution of Use: | This product contains Sodium azide: a POISONOUS AND HAZARDOUS SUBSTANCE which should be handled by trained staff only. |
| Storage: | -20 °C |
| Storage Comment: | Store at -20 °C. Stable for 12 months from date of receipt. |
| Expiry Date: | 12 months |



Immunofluorescence (fixed cells)

Image 1. ABIN6276083 staining HeLa by IF/ICC. The sample were fixed with PFA and permeabilized in 0.1% Triton X-100, then blocked in 10% serum for 45 minutes at 25°C. The primary antibody was diluted at 1/200 and incubated with the sample for 1 hour at 37°C. An Alexa Fluor 594 conjugated goat anti-rabbit IgG (H+L) Ab, diluted at 1/600, was used as the secondary antibody.