

Datasheet for ABIN6258988

anti-OR51G2 antibody (Internal Region)[Go to Product page](#)**1** Image

Overview

Quantity:	100 µL
Target:	OR51G2
Binding Specificity:	Internal Region
Reactivity:	Human
Host:	Rabbit
Clonality:	Polyclonal
Conjugate:	This OR51G2 antibody is un-conjugated
Application:	ELISA, Western Blotting (WB), Immunocytochemistry (ICC), Immunofluorescence (IF)

Product Details

Immunogen:	A synthesized peptide derived from human OR51G2, corresponding to a region within the internal amino acids.
Isotype:	IgG
Specificity:	OR51G2 Antibody detects endogenous levels of total OR51G2.
Predicted Reactivity:	Horse, Sheep, Rabbit, Dog
Purification:	The antiserum was purified by peptide affinity chromatography using SulfoLink™ Coupling Resin (Thermo Fisher Scientific).

Target Details

Target:	OR51G2
---------	--------

Target Details

Alternative Name: OR51G2 ([OR51G2 Products](#))

Background: Description: Odorant receptor.
Gene: OR51G2

Molecular Weight: 35 kDa

Gene ID: 81282

UniProt: [Q8NGK0](#)

Application Details

Application Notes: WB 1:500-1:1000, IF/ICC 1:100-1:500, ELISA(peptide) 1:20000-1:40000

Restrictions: For Research Use only

Handling

Format: Liquid

Concentration: 1 mg/mL

Buffer: Rabbit IgG in phosphate buffered saline , pH 7.4, 150 mM NaCl, 0.02 % sodium azide and 50 % glycerol.

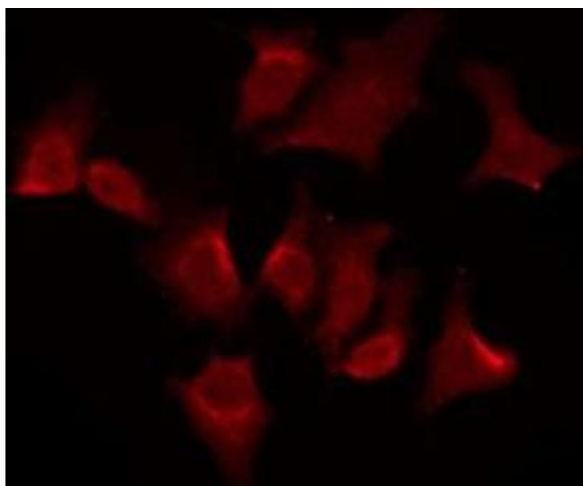
Preservative: Sodium azide

Precaution of Use: This product contains Sodium azide: a POISONOUS AND HAZARDOUS SUBSTANCE which should be handled by trained staff only.

Storage: -20 °C

Storage Comment: Store at -20 °C. Stable for 12 months from date of receipt.

Expiry Date: 12 months



Immunofluorescence (fixed cells)

Image 1. ABIN6276084 staining HeLa by IF/ICC. The sample were fixed with PFA and permeabilized in 0.1% Triton X-100, then blocked in 10% serum for 45 minutes at 25°C. The primary antibody was diluted at 1/200 and incubated with the sample for 1 hour at 37°C. An Alexa Fluor 594 conjugated goat anti-rabbit IgG (H+L) Ab, diluted at 1/600, was used as the secondary antibody.