

Datasheet for ABIN6259004  
**anti-OR13G1 antibody (C-Term)**[Go to Product page](#)

## 1 Image

## Overview

|                      |  |
|----------------------|--|
| Quantity:            | 100 µL   |
| Target:              | OR13G1   |
| Binding Specificity: | C-Term   |
| Reactivity:          | Human  |
| Host:                | Rabbit   |
| Clonality:           | Polyclonal   |
| Conjugate:           | This OR13G1 antibody is un-conjugated  |
| Application:         | Western Blotting (WB), ELISA, Immunocytochemistry (ICC), Immunofluorescence (IF) |

## Product Details

|                       |   |
|-----------------------|---|
| Immunogen:            | A synthesized peptide derived from human OR13G1, corresponding to a region within C-terminal amino acids.                 |
| Isotype:              | IgG   |
| Specificity:          | OR13G1 Antibody detects endogenous levels of total OR13G1.  |
| Predicted Reactivity: | Pig, Sheep, Dog   |
| Purification:         | The antiserum was purified by peptide affinity chromatography using SulfoLink™ Coupling Resin (Thermo Fisher Scientific). |

## Target Details

|         |        |
|---------|--------|
| Target: | OR13G1 |
|---------|--------|

## Target Details

|                   |  |
|-------------------|--|
| Alternative Name: | OR13G1 ( <a href="#">OR13G1 Products</a> ) |
|-------------------|--|

|             |  |
|-------------|--|
| Background: | Description: Odorant receptor.<br>Gene: OR13G1 |
|-------------|--|

|                   |        |
|-------------------|--------|
| Molecular Weight: | 35 kDa |
|-------------------|--------|

|          |        |
|----------|--------|
| Gene ID: | 441933 |
|----------|--------|

|          |                        |
|----------|------------------------|
| UniProt: | <a href="#">Q8NGZ3</a> |
|----------|------------------------|

## Application Details

|                    |   |
|--------------------|---|
| Application Notes: | WB 1:500-1:1000, IF/ICC 1:100-1:500, ELISA(peptide) 1:20000-1:40000 |
|--------------------|---|

|               |                       |
|---------------|-----------------------|
| Restrictions: | For Research Use only |
|---------------|-----------------------|

## Handling

|         |        |
|---------|--------|
| Format: | Liquid |
|---------|--------|

|                |         |
|----------------|---------|
| Concentration: | 1 mg/mL |
|----------------|---------|

|         |   |
|---------|---|
| Buffer: | Rabbit IgG in phosphate buffered saline , pH 7.4, 150 mM NaCl, 0.02 % sodium azide and 50 % glycerol. |
|---------|---|

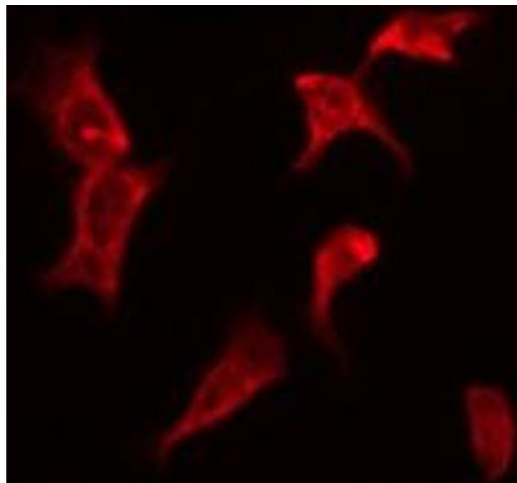
|               |              |
|---------------|--------------|
| Preservative: | Sodium azide |
|---------------|--------------|

|                    |  |
|--------------------|--|
| Precaution of Use: | This product contains Sodium azide: a POISONOUS AND HAZARDOUS SUBSTANCE which should be handled by trained staff only. |
|--------------------|--|

|          |        |
|----------|--------|
| Storage: | -20 °C |
|----------|--------|

|                  |   |
|------------------|---|
| Storage Comment: | Store at -20 °C. Stable for 12 months from date of receipt. |
|------------------|---|

|              |           |
|--------------|-----------|
| Expiry Date: | 12 months |
|--------------|-----------|



#### Immunofluorescence (fixed cells)

**Image 1.** ABIN6276119 staining 293 by IF/ICC. The sample were fixed with PFA and permeabilized in 0.1% Triton X-100, then blocked in 10% serum for 45 minutes at 25°C. The primary antibody was diluted at 1/200 and incubated with the sample for 1 hour at 37°C. An Alexa Fluor 594 conjugated goat anti-rabbit IgG (H+L) Ab, diluted at 1/600, was used as the secondary antibody