

Datasheet for ABIN625901
anti-MHC Class II RT-1B antibody

2 Images



[Go to Product page](#)

Overview

Quantity:	0.25 mg
Target:	MHC Class II RT-1B
Reactivity:	Rat, Mouse
Host:	Mouse
Clonality:	Monoclonal
Conjugate:	This MHC Class II RT-1B antibody is un-conjugated
Application:	Flow Cytometry (FACS), Immunohistochemistry (Frozen Sections) (IHC (fro)), Immunohistochemistry (Paraffin-embedded Sections) (IHC (p)), Immunohistochemistry (IHC), Western Blotting (WB)

Product Details

Brand:	IHC-plus™
Immunogen:	Rat thymocyte membrane glycoprotein. Type of Immunogen: Membrane extract
Clone:	OX-6
Isotype:	IgG1
Specificity:	Recognizes a monomorphic determinant of the rat I-A antigen present on B lymphocytes, dendritic cells, some macrophages and certain epithelial cells. Reacts with certain mouse strains of MHC haplotypes k and s. Analysis of recombinant mouse strains showed that the determinants mapped to the I-A region. Does not react with the BDIX rat strain. Expression is

Product Details

polymorphic in mice. This product is routinely tested in flow cytometry on rat splenocytes.

Purification: Protein G purified

Target Details

Target: MHC Class II RT-1B

Abstract: [MHC Class II RT-1B Products](#)

Application Details

Application Notes: Approved: Flo (1:50 - 1:100), IHC, IHC-Fr, IHC-P (10 µg/mL), WB

Usage: Flow Cytometry: Use 10 µL of the suggested working dilution to label 10⁶ cells in 100 µL. Method sheets are available on request. Immunohistology: This product does not require antigen retrieval using heat treatment or protein digestion prior to staining of formalin-fixed paraffin-embedded sections, but results may be enhanced with heat treatment using 0.01M citrate buffer pH 6. This clone has also been described reacting with paraffin-embedded material following PLP fixation (periodate-lysine-paraformaldehyde)

Comment: Target Species of Antibody: Rat

Restrictions: For Research Use only

Handling

Format: Liquid

Concentration: Lot specific

Buffer: PBS, pH 7.2, 0.09 % sodium azide.

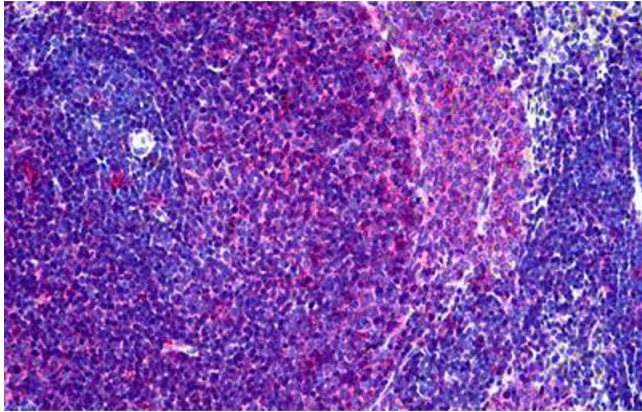
Preservative: Sodium azide

Precaution of Use: This product contains Sodium azide: a POISONOUS AND HAZARDOUS SUBSTANCE which should be handled by trained staff only.

Handling Advice: Avoid repeat freeze-thaw cycles.

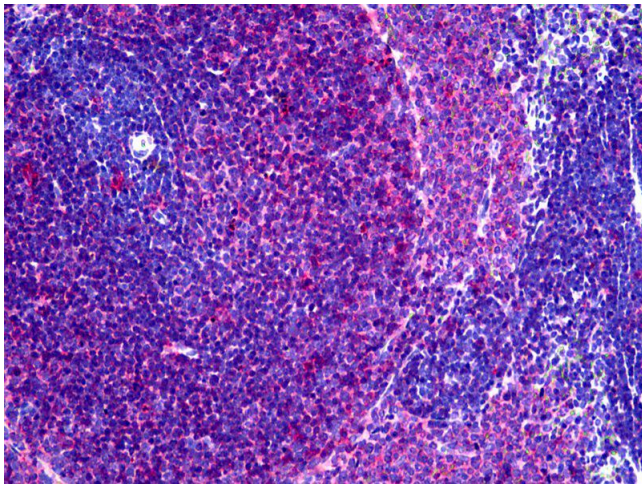
Storage: 4 °C, -20 °C

Storage Comment: Short term: 4°C. Long term: Store at -20°C. Avoid freeze-thaw cycles.



Immunohistochemistry (Formalin-fixed Paraffin-embedded Sections)

Image 1. Rat Spleen: Formalin-Fixed, Paraffin-Embedded (FFPE)



Immunohistochemistry

Image 2. Anti-MHC Class II RT-1B antibody IHC of rat spleen. Immunohistochemistry of formalin-fixed, paraffin-embedded tissue after heat-induced antigen retrieval. Antibody concentration 10 ug/ml.