



Datasheet for ABIN625903

## anti-IL16 antibody



[Go to Product page](#)

### 2 Images

#### Overview

Quantity:	50 µg
Target:	IL16
Reactivity:	Human
Host:	Mouse
Clonality:	Monoclonal
Conjugate:	This IL16 antibody is un-conjugated
Application:	Immunohistochemistry (IHC), Immunohistochemistry (Paraffin-embedded Sections) (IHC (p))

#### Product Details

Brand:	IHC-plus™
Immunogen:	Recombinant human IL-16 Type of Immunogen: Recombinant protein
Clone:	G11-II
Isotype:	IgG1
Specificity:	G11/II detects LCF, a homotetrameric glycoprotein of 56 kDa molecular weight that is composed of four noncovalently linked peptides of 14 kDa. Specificity: Human: LCF (IL-16). Other species: not tested.
Purification:	Affinity purified

## Target Details

---

Target:	IL16
Alternative Name:	IL16 ( <a href="#">IL16 Products</a> )
Background:	Name/Gene ID: IL16 Family: Hormone  Synonyms: IL16, IL-16, Interleukin 16, Neuronal interleukin 16, PrIL-16, NIL16, HsT19289, LCF, PRIL16, Pro-interleukin-16, Prointerleukin 16
Gene ID:	3603
UniProt:	<a href="#">Q14005</a>

## Application Details

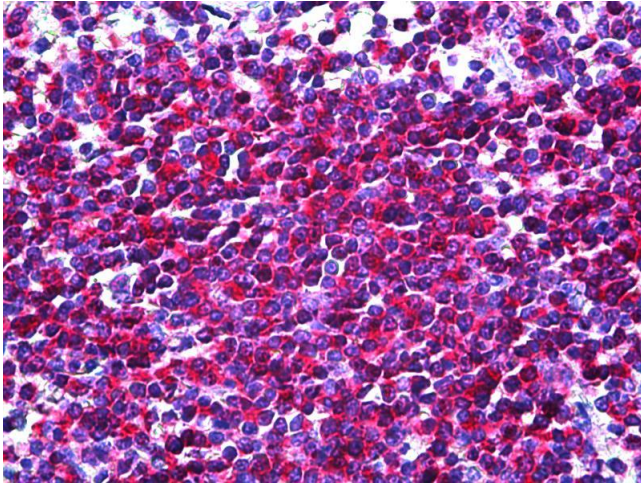
---

Application Notes:	Approved: IHC, IHC-P (5 µg/mL)
Restrictions:	For Research Use only

## Handling

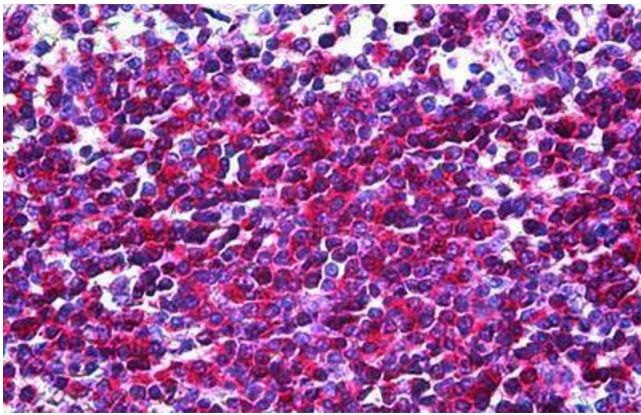
---

Format:	Liquid
Concentration:	Lot specific
Buffer:	PBS pH 7.2, 0.1 % sodium azide. Sourced in TCS.
Preservative:	Sodium azide
Precaution of Use:	This product contains Sodium azide: a POISONOUS AND HAZARDOUS SUBSTANCE which should be handled by trained staff only.
Handling Advice:	Minimize freezing and thawing.
Storage:	-20 °C
Storage Comment:	Aliquot and store at -20°C. Avoid freeze-thaw cycles.



### Immunohistochemistry

**Image 1.** Anti-IL-16 antibody IHC of human spleen. Immunohistochemistry of formalin-fixed, paraffin-embedded tissue after heat-induced antigen retrieval. Antibody concentration 5 ug/ml.



### Immunohistochemistry (Formalin-fixed Paraffin-embedded Sections)

**Image 2.** Human Spleen: Formalin-Fixed, Paraffin-Embedded (FFPE)