



[Go to Product page](#)

Datasheet for ABIN6259041
anti-LRRN1 antibody (C-Term)

1 Image

Overview

Quantity:	100 µL
Target:	LRRN1
Binding Specificity:	C-Term
Reactivity:	Human, Mouse, Rat
Host:	Rabbit
Clonality:	Polyclonal
Conjugate:	This LRRN1 antibody is un-conjugated
Application:	ELISA, Western Blotting (WB)

Product Details

Immunogen:	A synthesized peptide derived from human LRRN1, corresponding to a region within C-terminal amino acids.
Isotype:	IgG
Specificity:	LRRN1 Antibody detects endogenous levels of total LRRN1.
Predicted Reactivity:	Pig,Zebrafish,Bovine,Horse,Sheep,Rabbit,Dog,Chicken
Purification:	The antiserum was purified by peptide affinity chromatography using SulfoLink™ Coupling Resin (Thermo Fisher Scientific).

Target Details

Target:	LRRN1
---------	-------

Target Details

Alternative Name: LRRN1 ([LRRN1 Products](#))

Background: Gene: LRRN1

Molecular Weight: 73 kDa

Gene ID: 57633

UniProt: [Q6UXK5](#)

Application Details

Application Notes: WB 1:500-1:2000, ELISA(peptide) 1:20000-1:40000

Restrictions: For Research Use only

Handling

Format: Liquid

Concentration: 1 mg/mL

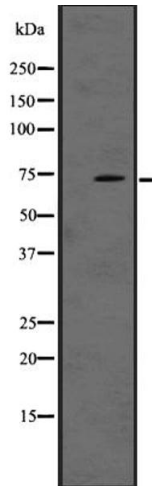
Buffer: Rabbit IgG in phosphate buffered saline, pH 7.4, 150 mM NaCl, 0.02 % sodium azide and 50 % glycerol.

Preservative: Sodium azide

Precaution of Use: This product contains Sodium azide: a POISONOUS AND HAZARDOUS SUBSTANCE which should be handled by trained staff only.

Storage: -20 °C

Expiry Date: 12 months



Western Blotting

Image 1. Western blot analysis of LRRN1 expression in A431 whole cell lysate ,The lane on the left is treated with the antigen-specific peptide.