



[Go to Product page](#)

Datasheet for ABIN6259049

anti-EBNA1BP2 antibody (Internal Region)

1 Image

Overview

Quantity:	100 µL
Target:	EBNA1BP2
Binding Specificity:	Internal Region
Reactivity:	Human, Mouse
Host:	Rabbit
Clonality:	Polyclonal
Conjugate:	This EBNA1BP2 antibody is un-conjugated
Application:	Western Blotting (WB), ELISA, Immunohistochemistry (IHC)

Product Details

Immunogen:	A synthesized peptide derived from human EBP2, corresponding to a region within the internal amino acids.
Isotype:	IgG
Specificity:	EBP2 Antibody detects endogenous levels of total EBP2.
Predicted Reactivity:	Pig,Bovine,Horse,Sheep,Rabbit,Dog,Chicken,Xenopus
Purification:	The antiserum was purified by peptide affinity chromatography using SulfoLink™ Coupling Resin (Thermo Fisher Scientific).

Target Details

Target:	EBNA1BP2
---------	----------

Target Details

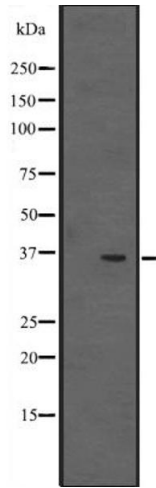
Alternative Name:	EBNA1BP2 (EBNA1BP2 Products)
Background:	Description: Required for the processing of the 27S pre-rRNA. Gene: EBNA1BP2
Molecular Weight:	35 kDa
Gene ID:	10969
UniProt:	Q99848

Application Details

Application Notes:	WB 1:500-1:2000, IHC 1:50-1:200, ELISA(peptide) 1:20000-1:40000
Restrictions:	For Research Use only

Handling

Format:	Liquid
Concentration:	1 mg/mL
Buffer:	Rabbit IgG in phosphate buffered saline, pH 7.4, 150 mM NaCl, 0.02 % sodium azide and 50 % glycerol.
Preservative:	Sodium azide
Precaution of Use:	This product contains Sodium azide: a POISONOUS AND HAZARDOUS SUBSTANCE which should be handled by trained staff only.
Storage:	-20 °C
Expiry Date:	12 months



Western Blotting

Image 1. Western blot analysis of EBP2 expression in NCI-H292 cell line lysates ,The lane on the left is treated with the antigen-specific peptide.