



[Go to Product page](#)

Datasheet for ABIN6259050  
**anti-C1orf35 antibody (C-Term)**

2 Images

Overview

Quantity:	100 µL
Target:	C1orf35
Binding Specificity:	C-Term
Reactivity:	Human, Mouse, Rat
Host:	Rabbit
Clonality:	Polyclonal
Conjugate:	This C1orf35 antibody is un-conjugated
Application:	Western Blotting (WB), ELISA, Immunocytochemistry (ICC), Immunofluorescence (IF)

Product Details

Immunogen:	A synthesized peptide derived from human MMTAG2, corresponding to a region within C-terminal amino acids.
Isotype:	IgG
Specificity:	MMTAG2 Antibody detects endogenous levels of total MMTAG2.
Purification:	The antiserum was purified by peptide affinity chromatography using SulfoLink™ Coupling Resin (Thermo Fisher Scientific).

Target Details

Target:	C1orf35
Alternative Name:	MMTAG2 ( <a href="#">C1orf35 Products</a> )

## Target Details

---

Background: Gene: MMTAG2

---

Molecular Weight: 34 kDa

---

Gene ID: 79169

---

UniProt: [Q9BU76](#)

---

## Application Details

---

Application Notes: WB 1:500-1:1000, IF/ICC 1:100-1:500, ELISA(peptide) 1:20000-1:40000

---

Restrictions: For Research Use only

---

## Handling

---

Format: Liquid

---

Concentration: 1 mg/mL

---

Buffer: Rabbit IgG in phosphate buffered saline , pH 7.4, 150 mM NaCl, 0.02 % sodium azide and 50 % glycerol.

---

Preservative: Sodium azide

---

Precaution of Use: This product contains Sodium azide: a POISONOUS AND HAZARDOUS SUBSTANCE which should be handled by trained staff only.

---

Storage: -20 °C

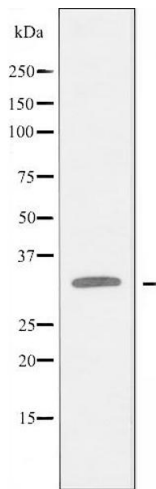
---

Storage Comment: Store at -20 °C. Stable for 12 months from date of receipt.

---

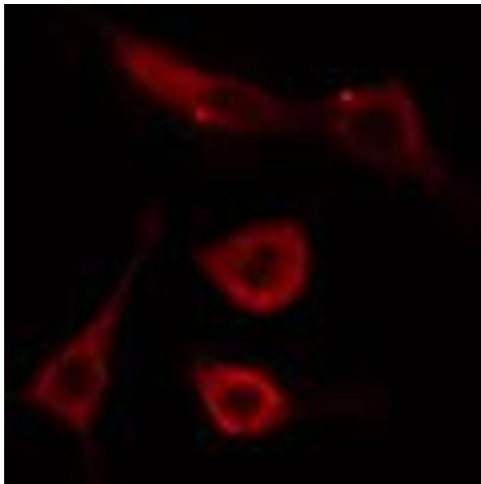
Expiry Date: 12 months

---



### Western Blotting

**Image 1.** Western blot analysis of extracts from K562 cells, using MMTA2 antibody.



### Immunofluorescence (fixed cells)

**Image 2.** ABIN6274492 staining HeLa cells by IF/ICC. The sample were fixed with PFA and permeabilized in 0.1% Triton X-100, then blocked in 10% serum for 45 minutes at 25°C. The primary antibody was diluted at 1/200 and incubated with the sample for 1 hour at 37°C. An Alexa Fluor 594 conjugated goat anti-rabbit IgG (H+L) antibody (Cat.# S0006), diluted at 1/600, was used as secondary antibody.