



[Go to Product page](#)

Datasheet for ABIN6259053

anti-LDOC1L antibody

2 Images

Overview

Quantity:	100 µL
Target:	LDOC1L
Reactivity:	Human, Mouse
Host:	Rabbit
Clonality:	Polyclonal
Conjugate:	This LDOC1L antibody is un-conjugated
Application:	Western Blotting (WB), ELISA, Immunocytochemistry (ICC), Immunofluorescence (IF)

Product Details

Immunogen:	A synthesized peptide
Isotype:	IgG
Specificity:	LDOC1L Antibody detects endogenous levels of total LDOC1L
Cross-Reactivity:	Human, Mouse (Murine)
Purification:	The antiserum was purified by peptide affinity chromatography using SulfoLink™ Coupling Resin (Thermo Fisher Scientific).

Target Details

Target:	LDOC1L
Alternative Name:	LDOC1L (LDOC1L Products)
Background:	Description: RTL6 is one of at least 11 genes called Mar or Mart related to long terminal repeat

Target Details

retrotransposons. They do not correspond to functional retrotransposons, but rather to neofunctionalized retrotransposons genes.

Gene: RTL6

Molecular Weight: 24 kDa

Gene ID: 84247

UniProt: [Q6ICC9](#)

Application Details

Application Notes: WB 1:500~1:1000, IF/ICC 1:100-1:500

Restrictions: For Research Use only

Handling

Format: Liquid

Concentration: 1 mg/mL

Buffer: Rabbit IgG in phosphate buffered saline , pH 7.4, 150 mM NaCl, 0.02 % sodium azide and 50 % glycerol.

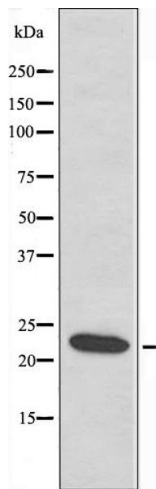
Preservative: Sodium azide

Precaution of Use: This product contains Sodium azide: a POISONOUS AND HAZARDOUS SUBSTANCE which should be handled by trained staff only.

Storage: -20 °C

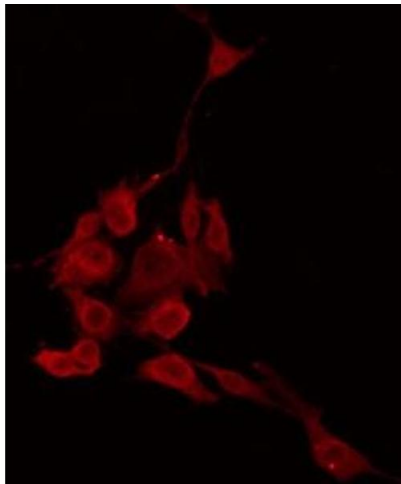
Storage Comment: Store at -20 °C.Stable for 12 months from date of receipt

Expiry Date: 12 months



Western Blotting

Image 1. Western blot analysis of extracts from COLO205 cells, using LDOCL antibody.



Immunofluorescence (fixed cells)

Image 2. ABIN6274399 staining COLO205 by IF/ICC. The sample were fixed with PFA and permeabilized in 0.1% Triton X-100, then blocked in 10% serum for 45 minutes at 25°C. The primary antibody was diluted at 1/200 and incubated with the sample for 1 hour at 37°C. An Alexa Fluor 594 conjugated goat anti-rabbit IgG (H+L) Ab, diluted at 1/600, was used as the secondary antibody.