

Datasheet for ABIN6259062

**anti-TFAP2D antibody (Internal Region)****2** Images[Go to Product page](#)

## Overview

Quantity:	100 µL
Target:	TFAP2D
Binding Specificity:	Internal Region
Reactivity:	Human, Mouse, Rat
Host:	Rabbit
Clonality:	Polyclonal
Conjugate:	This TFAP2D antibody is un-conjugated
Application:	Western Blotting (WB), ELISA, Immunohistochemistry (IHC)

## Product Details

Immunogen:	A synthesized peptide derived from human TFAP2D, corresponding to a region within the internal amino acids.
Isotype:	IgG
Specificity:	TFAP2D Antibody detects endogenous levels of total TFAP2D.
Predicted Reactivity:	Pig,Bovine,Horse,Sheep,Rabbit,Dog,Chicken
Purification:	The antiserum was purified by peptide affinity chromatography using SulfoLink™ Coupling Resin (Thermo Fisher Scientific).

## Target Details

Target:	TFAP2D
---------	--------

## Target Details

Alternative Name: TFAP2D ([TFAP2D Products](#))

Background: Description: Sequence-specific DNA-binding protein that interacts with inducible viral and cellular enhancer elements to regulate transcription of selected genes. AP-2 factors bind to the consensus sequence 5'-GCCNNNGGC-3' and activate genes involved in a large spectrum of important biological functions including proper eye, face, body wall, limb and neural tube development. They also suppress a number of genes including MCAM/MUC18, C/EBP alpha and MYC (By similarity).  
Gene: TFAP2D

Molecular Weight: 50 kDa

Gene ID: 83741

UniProt: [Q7Z6R9](#)

## Application Details

Application Notes: WB 1:500-1:2000, IHC 1:50-1:200, ELISA(peptide) 1:20000-1:40000

Restrictions: For Research Use only

## Handling

Format: Liquid

Concentration: 1 mg/mL

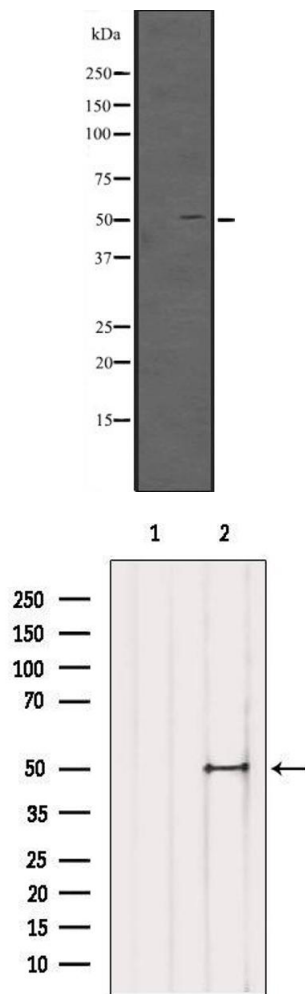
Buffer: Rabbit IgG in phosphate buffered saline, pH 7.4, 150 mM NaCl, 0.02 % sodium azide and 50 % glycerol.

Preservative: Sodium azide

Precaution of Use: This product contains Sodium azide: a POISONOUS AND HAZARDOUS SUBSTANCE which should be handled by trained staff only.

Storage: -20 °C

Expiry Date: 12 months



### Western Blotting

**Image 1.** Western blot analysis of TFAP2D expression in TFAP2D transfected 293T cell lysate, The lane on the left is treated with the antigen-specific peptide.

### Western Blotting

**Image 2.** Western blot analysis of extracts from Mouse brain, using TFAP2D Antibody. The lane on the left was treated with blocking peptide.