

Datasheet for ABIN6259069
anti-PTGIS antibody (Internal Region)[Go to Product page](#)

3 Images

Overview

Quantity:	100 µL
Target:	PTGIS
Binding Specificity:	Internal Region
Reactivity:	Human, Mouse, Rat
Host:	Rabbit
Clonality:	Polyclonal
Conjugate:	This PTGIS antibody is un-conjugated
Application:	Western Blotting (WB), ELISA, Immunohistochemistry (IHC), Immunocytochemistry (ICC), Immunofluorescence (IF)

Product Details

Immunogen:	A synthesized peptide derived from human PTGIS, corresponding to a region within the internal amino acids.
Isotype:	IgG
Specificity:	PTGIS Antibody detects endogenous levels of total PTGIS.
Predicted Reactivity:	Pig,Bovine,Horse,Sheep,Dog
Purification:	The antiserum was purified by peptide affinity chromatography using SulfoLink™ Coupling Resin (Thermo Fisher Scientific).

Target Details

Target:	PTGIS
---------	-------

Target Details

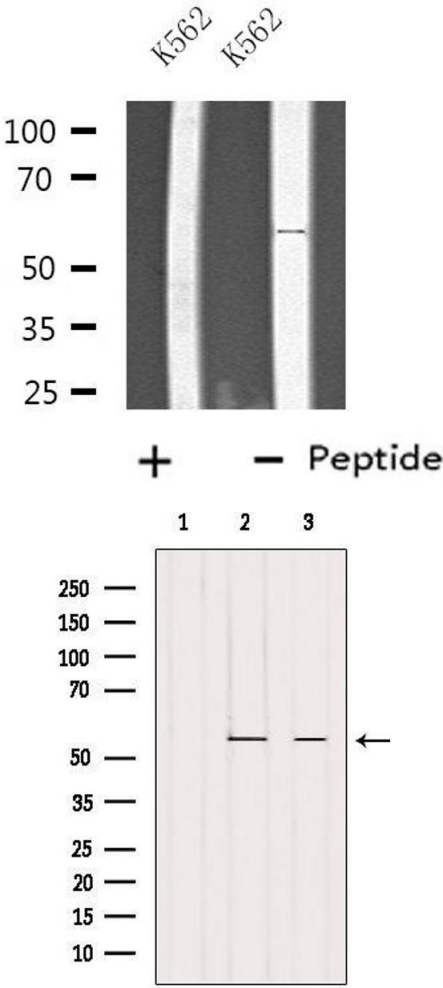
Alternative Name:	PTGIS (PTGIS Products)
Background:	Description: Catalyzes the isomerization of prostaglandin H2 to prostacyclin (= prostaglandin I2). Gene: PTGIS
Molecular Weight:	57 kDa
Gene ID:	5740
UniProt:	Q16647

Application Details

Application Notes:	WB 1:500-1:1000, IF/ICC 1:100-1:500, IHC 1:50-1:200, ELISA(peptide) 1:20000-1:40000
Restrictions:	For Research Use only

Handling

Format:	Liquid
Concentration:	1 mg/mL
Buffer:	Rabbit IgG in phosphate buffered saline , pH 7.4, 150 mM NaCl, 0.02 % sodium azide and 50 % glycerol.
Preservative:	Sodium azide
Precaution of Use:	This product contains Sodium azide: a POISONOUS AND HAZARDOUS SUBSTANCE which should be handled by trained staff only.
Storage:	-20 °C
Storage Comment:	Store at -20 °C. Stable for 12 months from date of receipt.
Expiry Date:	12 months

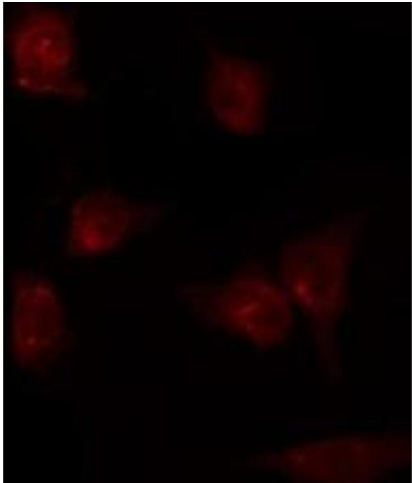


Western Blotting

Image 1. Western blot analysis of extracts from K562 cells, using PTGIS antibody.

Western Blotting

Image 2. Western blot analysis of extracts from various samples, using PTGIS Antibody. Lane 1: HeLa treated with blocking peptide; Lane 2: HeLa; Lane 3: 293.



Immunofluorescence (fixed cells)

Image 3. ABIN6275809 staining K562 by IF/ICC. The sample were fixed with PFA and permeabilized in 0.1% Triton X-100, then blocked in 10% serum for 45 minutes at 25°C. The primary antibody was diluted at 1/200 and incubated with the sample for 1 hour at 37°C. An Alexa Fluor 594 conjugated goat anti-rabbit IgG (H+L) Ab, diluted at 1/600, was used as the secondary antibody.