

Datasheet for ABIN6259081

**anti-Purinergic Receptor P2Y, G-Protein Coupled, 13 (P2RY13)
(C-Term) antibody**[Go to Product page](#)**2** Images

Overview

Quantity:	100 µL
Target:	Purinergic Receptor P2Y, G-Protein Coupled, 13 (P2RY13)
Binding Specificity:	C-Term
Reactivity:	Human
Host:	Rabbit
Clonality:	Polyclonal
Conjugate:	Un-conjugated
Application:	Western Blotting (WB), ELISA, Immunohistochemistry (IHC)

Product Details

Immunogen:	A synthesized peptide derived from human GPR86/GPR94, corresponding to a region within C-terminal amino acids.
Isotype:	IgG
Specificity:	GPR86/GPR94 Antibody detects endogenous levels of total GPR86/GPR94.
Predicted Reactivity:	Dog
Purification:	The antiserum was purified by peptide affinity chromatography using SulfoLink™ Coupling Resin (Thermo Fisher Scientific).

Target Details

Target:	Purinergic Receptor P2Y, G-Protein Coupled, 13 (P2RY13)
---------	---

Target Details

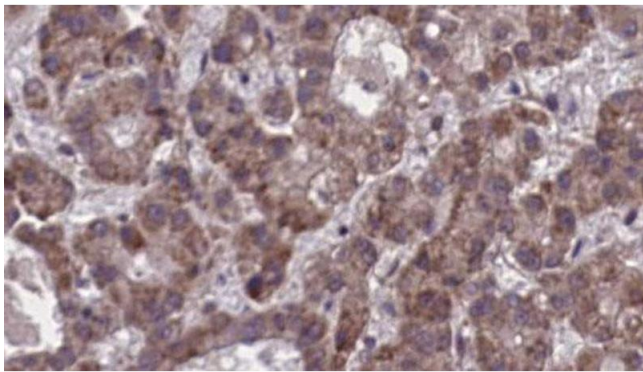
Alternative Name:	P2RY13 (P2RY13 Products)
Background:	Description: Receptor for ADP. Coupled to G(i)-proteins. May play a role in hematopoiesis and the immune system. Gene: P2RY13
Molecular Weight:	41 kDa
Gene ID:	53829
UniProt:	Q9BPV8
Pathways:	cAMP Metabolic Process

Application Details

Application Notes:	WB 1:500-1:2000, IHC 1:50-1:200, ELISA(peptide) 1:20000-1:40000
Restrictions:	For Research Use only

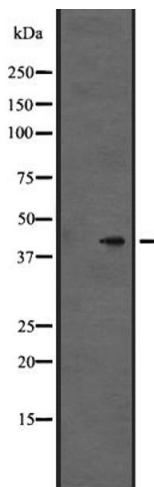
Handling

Format:	Liquid
Concentration:	1 mg/mL
Buffer:	Rabbit IgG in phosphate buffered saline, pH 7.4, 150 mM NaCl, 0.02 % sodium azide and 50 % glycerol.
Preservative:	Sodium azide
Precaution of Use:	This product contains Sodium azide: a POISONOUS AND HAZARDOUS SUBSTANCE which should be handled by trained staff only.
Storage:	-20 °C
Expiry Date:	12 months



Immunohistochemistry

Image 1. ABIN6273900 at 1/100 staining Human liver cancer tissue by IHC-P. The sample was formaldehyde fixed and a heat mediated antigen retrieval step in citrate buffer was performed. The sample was then blocked and incubated with the antibody for 1.5 hours at 22°C. An HRP conjugated goat anti-rabbit antibody was used as the secondary.



Western Blotting

Image 2. Western blot analysis of GPR86/GPR94 expression in HeLa cell lysate. The lane on the left is treated with the antigen-specific peptide.